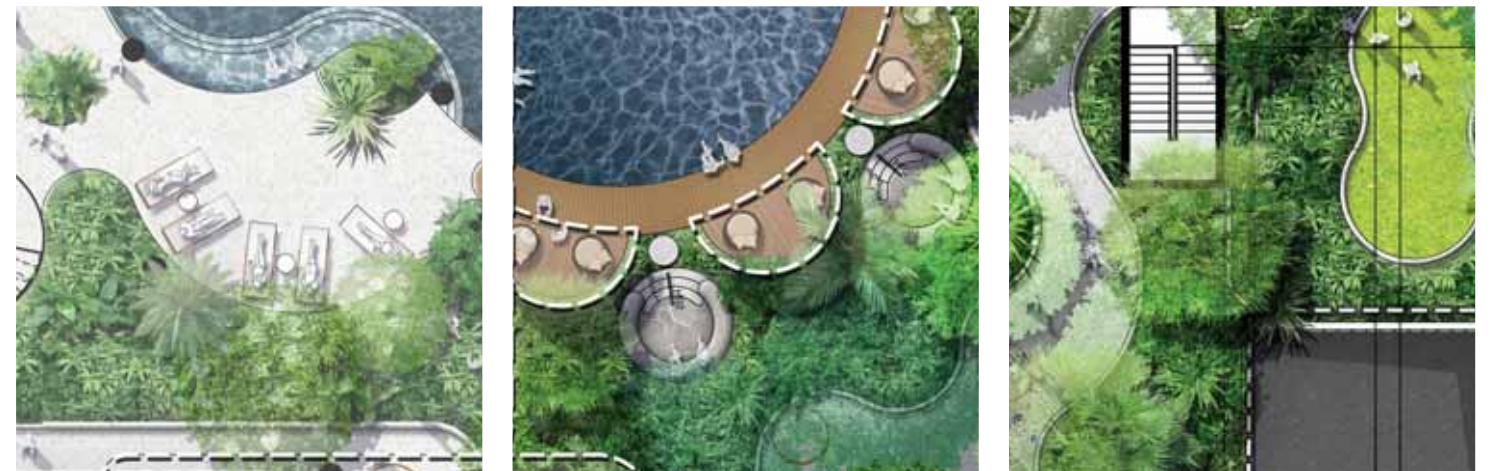


Part Three

Landscape Design



BCC DS
LODGED
21/07/2021
APPLICATION REF
A005794918

Landscape Design
3.1 Masterplan

BCC DS
LODGED
 21/07/2021
APPLICATION REF
 A005794918



Legend

- 1** Pool deck
- 2** Amphitheatre
- 3** Vehicular entry
- 4** Open lawn
- 5** Lobby courtyard
- 6** Carpark
- 7** Existing bio basin
- 8** Basement entry
- 9** Lawn pocket
- 10** On street parking
- 11** Padmount and bin store



Landscape Design
3.2 Tower C Plan

BCC DS
LODGED
 21/07/2021
APPLICATION REF
 A005794918



Key Plan | Ground Level

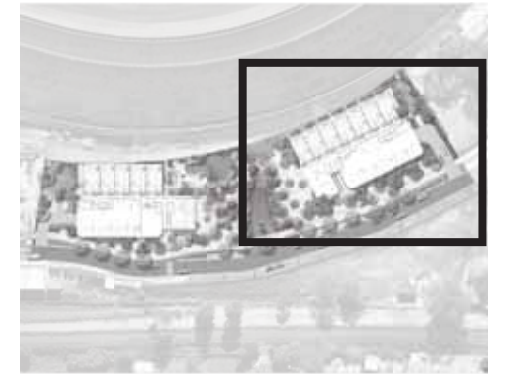
Legend

- 1** Pool deck
- 2** Lobby courtyard
- 3** Open lawn
- 4** Carpark entry
- 5** Access to racecourse
- 6** Garden walk
- 7** Residential access
- 8** Existing bio basin
- 9** Dedicated cycleway
- 10** Pedestrian entry
- 11** Awning structure over
- 12** Feature trees to deep planting corner
- 13** Padmount and bin store
- 14** Loading bay



Landscape Design
3.3 Tower D Plan

BCC DS
LODGED
 21/07/2021
APPLICATION REF
 A005794918



Key Plan | Ground Level

Legend

- 1** Pedestrian entry
- 2** Lobby courtyard
- 3** Open lawn
- 4** Carpark entry
- 5** Amphitheatre
- 6** Viewing deck
- 7** Residential access
- 8** Existing bio basin
- 9** Dedicated cycleway
- 10** Private courtyard
- 11** Basement entry



Landscape Design
3.4 Tower C Pool

BCC DS
LODGED
 21/07/2021
APPLICATION REF
 A005794918



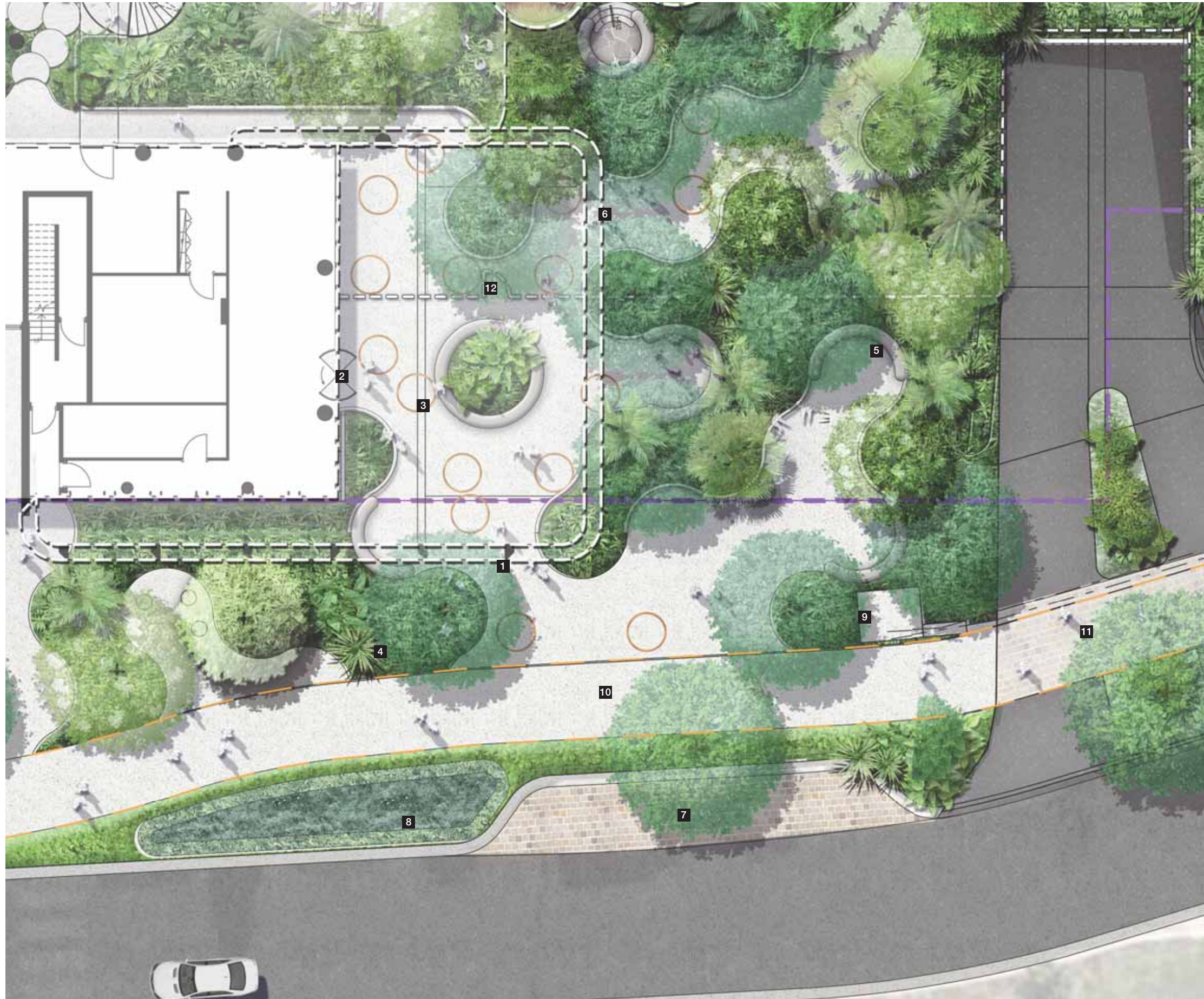
Key Plan | Ground Level

Legend

- 1** Lap pool
- 2** Pool deck
- 3** Feature pool edge
- 4** Stair access from tower
- 5** PWD lift
- 6** Garden walk
- 7** High bar
- 8** Daybed
- 9** Seating pod
- 10** Sunlounger area
- 11** Wading pool and steps
- 12** Stair and gate access
- 13** Security fence



3.5 Tower C Lobby Courtyard



Key Plan | Ground Level

Legend

- 1** Pedestrian entry
- 2** Lobby entry
- 3** Feature pavement
- 4** Feature planting
- 5** Private seating node
- 6** Awning over
- 7** On street parking
- 8** Bio basin
- 9** Service cabinet
- 10** Dedicated cycle path
- 11** Feature pedestrian crossing
- 12** Gate

BCC DS
LODGED

21/07/2021

APPLICATION REF

A005794918

