

LODGED  
30/06/2020  
BCC DS



# Glenelg St Master Plan

## South Brisbane





DOCUMENT REGISTER

Project	Glenelg Street Master Plan
Report Title	WIP Master Plan for Stakeholder Discussions
Revision Version	01
Document No.	20045.01_Glenelg St MP_A3_Lat27_01.pdf
Prepared for	Aria Property Group
Authors	Lat27

Revision	Date	Approved	Details of Revision
A	30/05/2020	DT	For Review
B	1/06/2020	DT	For Review
C	23/06/2020	DT	For Review
D	25/06/2020	DT	For Review
01	29/06/2020	DT	For Information

This document has been prepared solely for the benefit of ARIA Property Group and is issued in confidence for the purposes only for which it is supplied. Unauthorized use of this document in any form whatsoever is prohibited. No liability is accepted by Lat27 any employee, contractor, or sub-consultant of this company with respect to its use by any other person. This disclaimer shall apply notwithstanding that the document may be made available to other persons.





SITE CONTEXT

A critical local and city-scale connection

Linking the River to Musgrave Park via South Bank, Glenelg Street has the potential to become one of Brisbane's great Subtropical Boulevards.

Across the following pages this draft master plan proposes a number of ways to amplify local opportunities and characteristics within an overarching 'green spine' concept.



A. Musgrave Park: A huge parkland opportunity



B. Convert Glenelg Street into a shady, subtropical boulevard



C. Make a new public park with a focus on education



D. Improve precinct event management requirements



E. The Undercroft can help improve the River + Park link



F. Improve River/ South Bank Parklands connections



SITE CONTEXT

Opportunities to engage

The following opportunities will transform this part of South Brisbane, by improving Glenelg Street as a Green Spine it will activate street corners, edges and undercrofts. Creating a better connection from Park to River.

1 MUSGRAVE PARK ENTRY UPGRADE

- Create a entry/front door to Musgrave Park a highly utilised community space
- Create a safer pedestrian experience at crossings
- Provide better public amenity at intersection

2 WORLDS GREENEST RESIDENTIAL BUILDING

- The new worldwide standard for green residential buildings and a new landmark for Brisbane
- Building as a landscape element
- Provides community benefit and amenity

3 NEW PUBLIC PARK

- Outdoor learning/classrooms
- Public Stage
- Amphitheatre
- Flexible Event Space

4 GREEN SPINE

- Strengthen the link from Musgrave Park to the River
- Ability to close street for community parties/events
- Leafy, Custom-lit, Sub-tropical Streetscape

5 TAFE QLD PARK EDGE UPGRADE

- Create a welcoming, flexible 'landing pad' into the TAFE
- Enable community events to activate this side of the intersection (in tandem with our new park)
- Potential community artwork on this open corner as part of precinct wayfinding.

6 ART UNDERCROFT

- Draws pedestrians under and through
- Projection Art, Lighting and seating
- Green Walls + signage flanking entries
- No works to bridge soffit

7 PARKLANDS ARRIVAL

- Links pedestrians under and through
- Providing a safer and more interesting link
- Colour and lighting to be incorporated





KEY PLAN

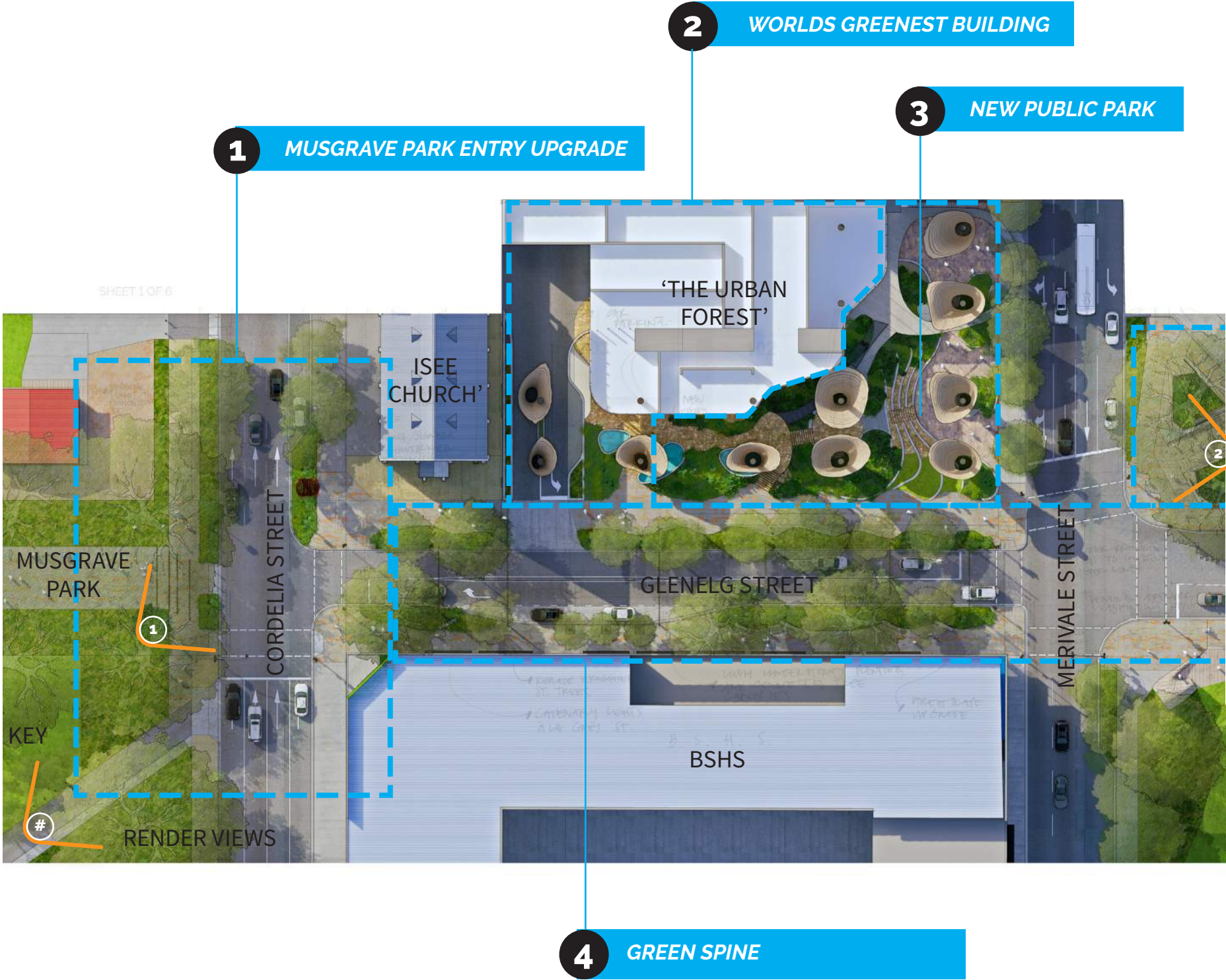
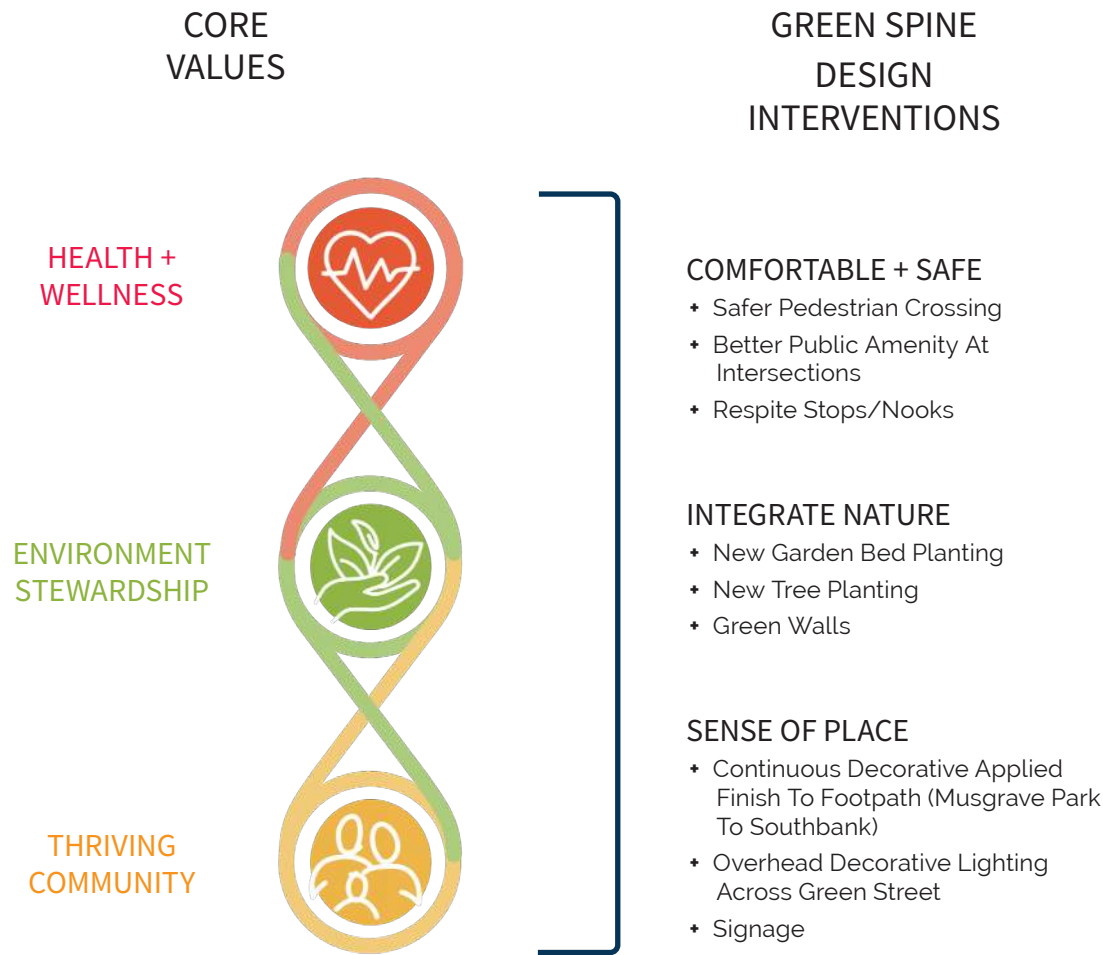




DESIGN STRATEGIES

Within the existing urban fabric of Glenelg Street the team have identified a series of discreet 'projects' that, together, can transform this service road into a lush, vibrant and memorable connection from Park to River.

Each project identified opposite, and elaborated further on following pages, contains design interventions that support the project's core values:





**5** NEW BCEC MEETING PLACE

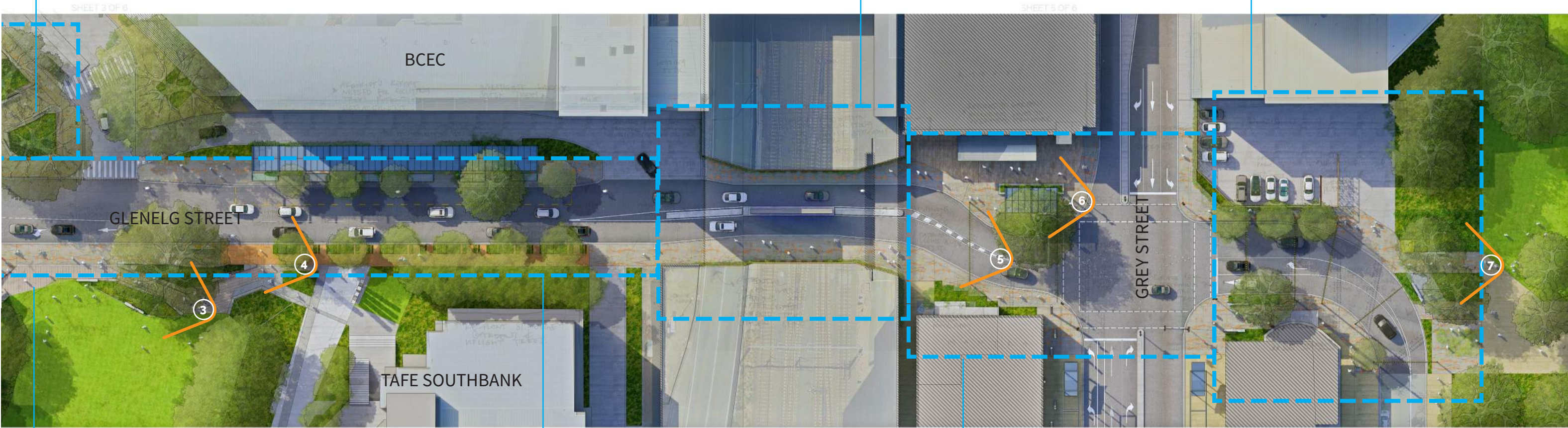
**8** PARKLANDS ARRIVAL

**7** ART UNDERCROFT

**6** TAFE QLD CORNER UPGRADE

**4** GREEN SPINE

**4** GREEN SPINE



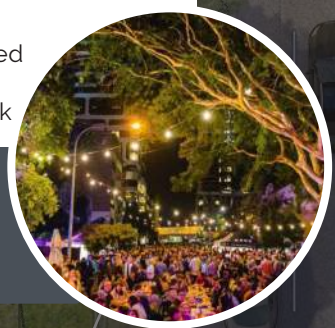


# GLENELG STREET MASTERPLAN

## 1 MUSGRAVE PARK ENTRY UPGRADE

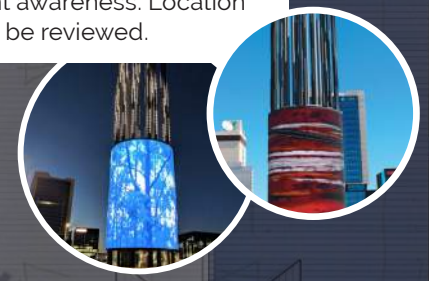
- Safer pedestrian crossing experience
- Better public amenity (furniture: seating, lighting, bins)
- New groundcover planting
- Continuous decorative applied finish to footpath from Musgrave park to South Bank

EXTEND LIGHTING ACROSS THE PARK FOR IMPROVED ACTIVATION AND SAFETY



## LANDMARK ARTWORK

Utilise highly visible, programmable wayfinding markers to assist precinct navigation and event awareness. Location alongside church to be reviewed.



iSEE CHURCH

## 2 WORLDS GREENEST BUILDING

- The new worldwide standard for green buildings and a new landmark for Brisbane
- Provides community benefit and amenity
- Building as a landscape element



## 4 GREEN SPINE 1

INTERSECTION A: GLENELG ST. X CORDELIA ST.

- Safer pedestrian experience
- Groundcover planting
- Continuous decorative applied finish to footpath from Musgrave park to South Bank

## 4 GREEN SPINE 2

GLENELG STREET UPGRADE SECTION A

- Safer pedestrian experience
- Groundcover + Tree planting
- Continuous decorative applied finish to footpath from Musgrave park to South Bank
- Overhead decorative lighting at the Southbank termination of Glenelg Street





### 3 NEW PUBLIC PARK

- Outdoor learning/ classrooms
- Public Stage
- Amphitheatre
- Flexible Event Space

INTEGRATE THE NEW PARK INTO THE BROADER PUBLIC DOMAIN THROUGH OPEN, POROUS EDGES + A HIGHLY CURATED EVENT PROGRAM

### 5 NEW BCEC MEETING PLACE

- Bespoke pendant lighting to key existing trees (a' la Melbourne St)
- Timber decking to base of Figs to create a place of respite + amenity
- Reinforcing the intersection's role as a place of gathering

### 4 GREEN SPINE 4 GLENELG STREET UPGRADE SECTION B

- Safer pedestrian experience
- Groundcover + Tree planting
- Continuous decorative applied finish to footpath from Musgrave park to South Bank
- Overhead decorative lighting at the Southbank termination of Glenelg Street

### 4 GREEN SPINE 3 INTERSECTION B: GLENELG ST. X MERIVALE ST.

- Safer pedestrian experience
- Groundcover planting
- Continuous decorative applied finish to footpath from Musgrave park to South Bank

### LANDMARK ARTWORK

'Anchor' the corner TAFE park into the precinct with an iconic corner artwork/ wayfinding element.

### 6 TAFE QLD CORNER UPGRADE

- Create a welcoming, flexible 'landing pad' into the TAFE
- Enable community events to activate this side of the intersection (in tandem with our new park)
- Potential community artwork on this open corner as part of precinct wayfinding.



1:250 @ A3

Sheet 2 of 5



6

## TAFE QLD PARK EDGE UPGRADE



- Create a welcoming, flexible 'landing pad' into the TAFE



- Enable community events to activate this side of the intersection (in tandem with our new park)



- Potential community artwork on this open corner as part of precinct wayfinding.

TIMBER DECK AND SEATING CAREFULLY BUILT AROUND THE EXISTING FIGS PROVIDES PLACES TO MEET, TAKE A CALL OR JUST SIMPLY APPRECIATE THESE MAGNIFICENT TREES.

4

## GREEN SPINE 4

### GLENELG STREET UPGRADE SECTION B



- Safer pedestrian experience



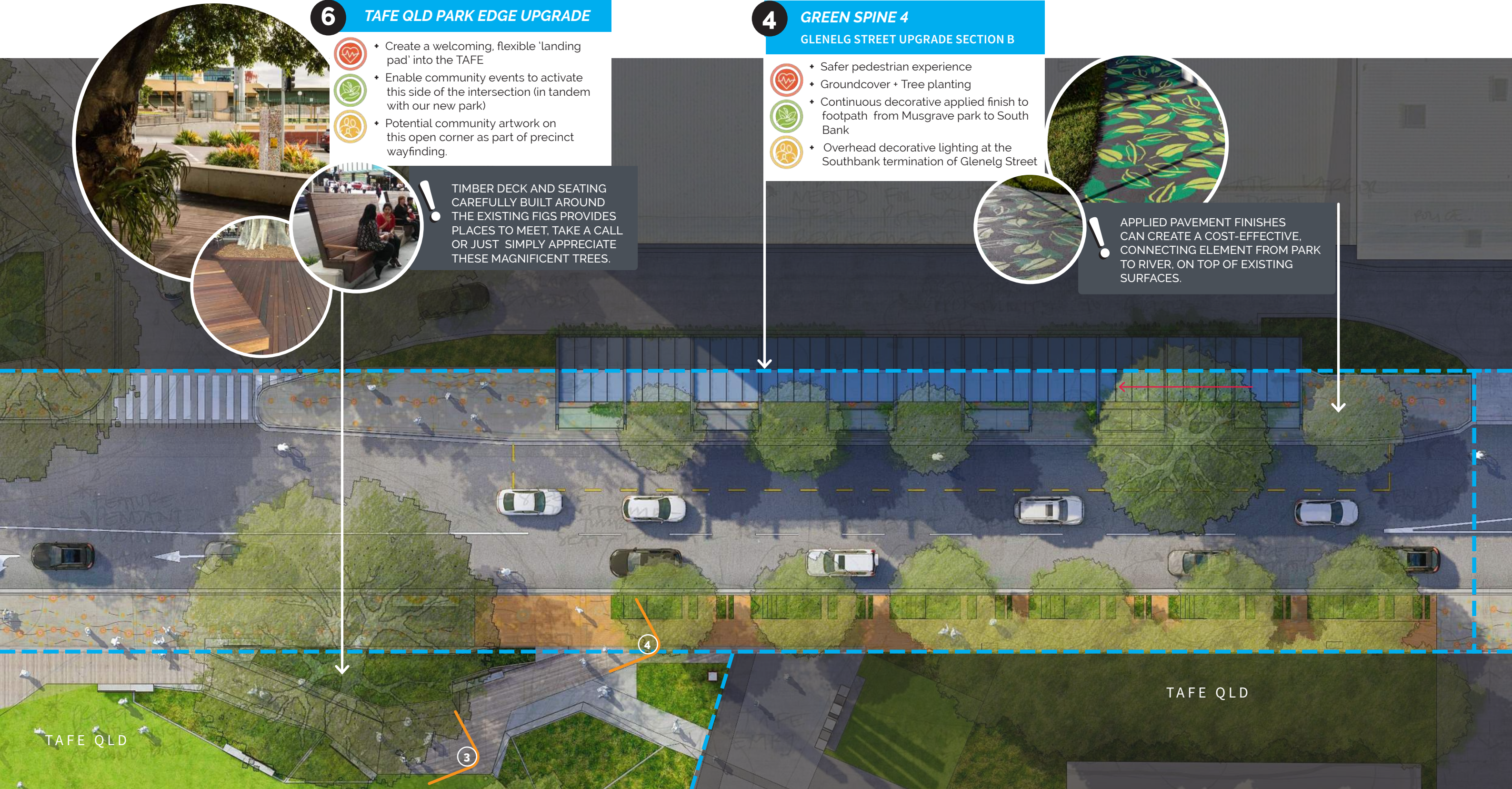
- Groundcover + Tree planting



- Continuous decorative applied finish to footpath from Musgrave park to South Bank

- Overhead decorative lighting at the Southbank termination of Glenelg Street

APPLIED PAVEMENT FINISHES CAN CREATE A COST-EFFECTIVE, CONNECTING ELEMENT FROM PARK TO RIVER, ON TOP OF EXISTING SURFACES.



1:250 @ A3



Sheet 3 of 5





7

## ART UNDERCROFT



- Draws pedestrians under and through
- Projection Art, Lighting and seating
- Green Walls + signage flanking entries
- No works to bridge soffit



POTENTIAL ARTWORK EXPERIENCES CAN ANIMATE AN OTHERWISE DULL, UNINVITING SPACE WITHOUT DAMAGING CRITICAL INFRASTRUCTURE

4

## GREEN SPINE 5

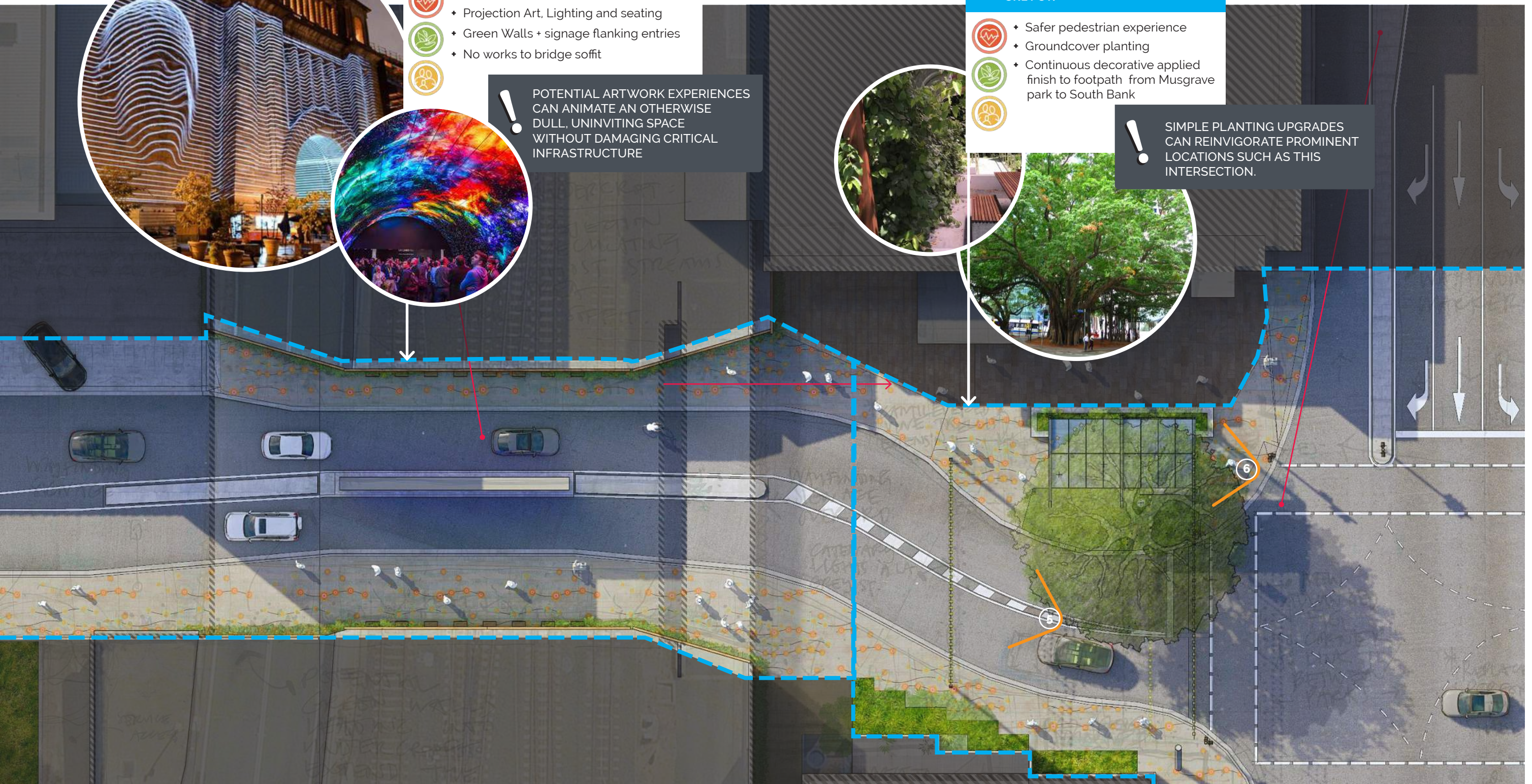
INTERSECTION C: GLENELG ST. X GREY ST.



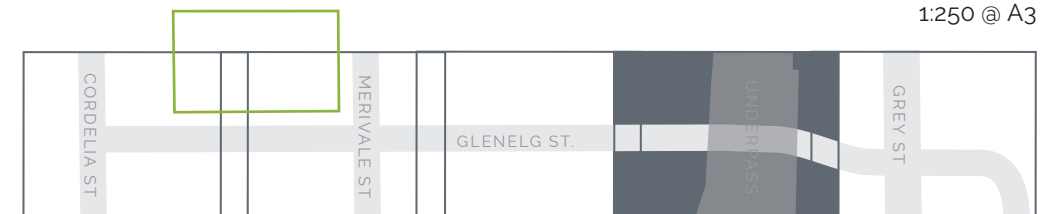
- Safer pedestrian experience
- Groundcover planting
- Continuous decorative applied finish to footpath from Musgrave park to South Bank



SIMPLE PLANTING UPGRADES CAN REINVIGORATE PROMINENT LOCATIONS SUCH AS THIS INTERSECTION.



1:250 @ A3



Sheet 4 of 5



# 4 GREEN SPINE 5

## INTERSECTION C: GLENELG ST. X GREY ST.

- Safer pedestrian experience
- Groundcover planting
- Continuous decorative applied finish to footpath from Musgrave park to South Bank
- Catenary lighting over street



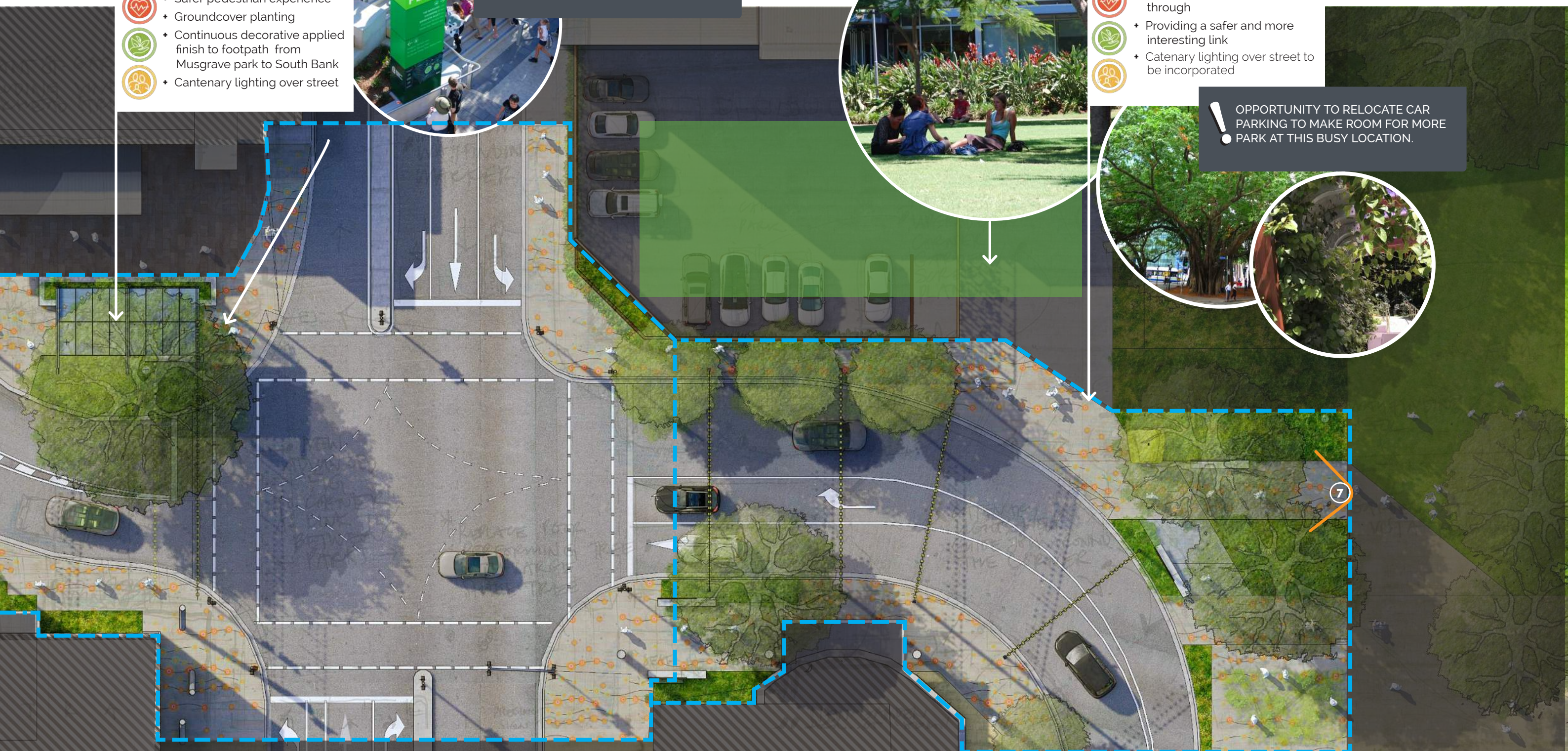
! A 'FAMILY' OF WAYFINDING ELEMENTS DEPLOYED ACROSS THE PRECINCT WILL IMPROVE LEGIBILITY AND PROVIDE OPPORTUNITIES TO TELL THE SITE'S STORIES.

# 8 PARKLANDS ARRIVAL

- Links pedestrians under and through
- Providing a safer and more interesting link
- Catenary lighting over street to be incorporated



! OPPORTUNITY TO RELOCATE CAR PARKING TO MAKE ROOM FOR MORE PARK AT THIS BUSY LOCATION.

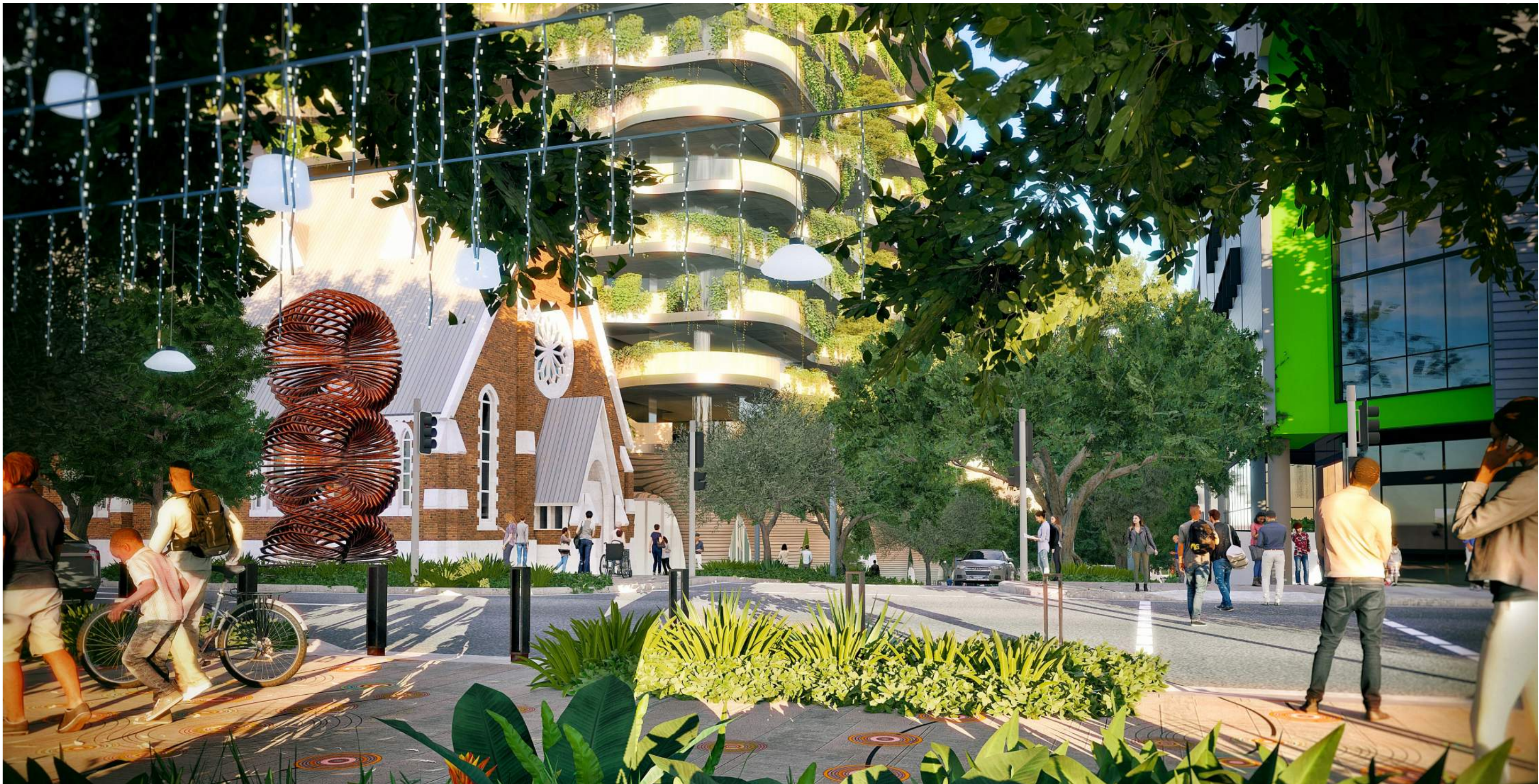


1:250 @ A3



Sheet 5 of 5





































SHEET 2 OF 2

1:500 @ A3





Level 5, 300 Ann Street, Brisbane QLD 4000  
PO Box 10954, Brisbane Adelaide Street QLD 4000  
**07 3236 1086**  
[info@lat27.com.au](mailto:info@lat27.com.au)

© COPYRIGHT LAT27 PTY LTD ALL RIGHTS RESERVED.