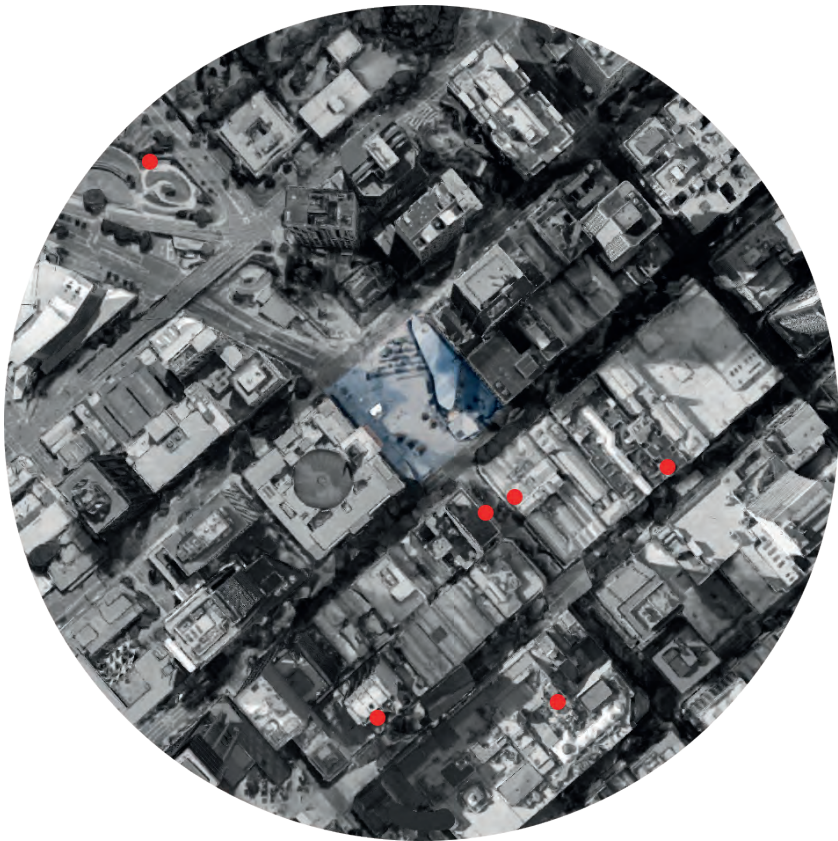


COMIC-CON & COSPLAY FESTIVAL

Comic-con & cosplay culture have always been seen as a sub-culture or even an under-culture. This festival would promote and encourage more people to try putting a costume on for a day.

Quote from Dragon Ball Z (Buu saga)
Goku: You're going to love this, trust me
Babidi: ...What a useless transformation, you change your hair, so what!
Goku: Just wait.....and this..... is to go even further beyond!!!!



Comic or cosplay group activities around King George Square

Cosplay group has gathering every Saturday in Roma St Parkland due to the limited cosplay location. By relocate the comic group to King George Square could top up the culture.
Futhur more, most of the comic-con events are indoor. By having it done outdoor is a good oppotunity to show of themselves.

~There is a Marvel Exhibition in GOMA till the middle of September.

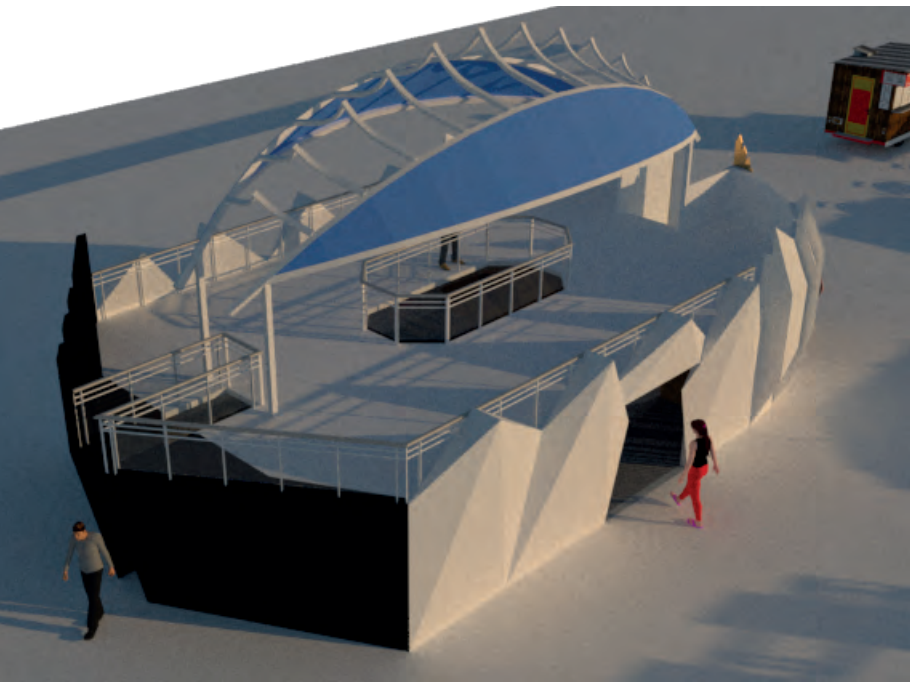


1. shop -for people to rent costume & item
2. changing room
3. photo boards (entry)
4. exhibitor(s)
5. SHIP -the central of the festival
6. food track

The SHIP around floor is a darker place to give the sense of mystery. It content 5 tv monitors and a curved mirror.
On the 1st floor, the round steel frame with glass structure give the sense of they are not on top of the ship, they are still inside it.
The other attractive thing is the curve photo boards (3) which located in the entry. People would get attracted by the cosplayer on board taking photos.



This is a monthly event and must be cosplay event every Saturday & Sunday. In week days it would function as an extension of the museum of Brisbane. Using the monitors to teach the history. (Like QUT P block)
The food court has been placed just next to the SHIP and exhibitors, so they won't make the cloth shop dirty.



It is depends on what you can see & imagine. The SHIP itself the the journey of seek and adventure.

There are 3 hours for the grand tour. The dark and narrow entry represent the Old & NSW boundary. The white door represent normal door. The stair to the 1st floor represent grand entry. The Entry of the Gods into Valhalla.

The middle hole allows people to have more interactive with others. Bacially, the whole idea of SHIP is to give them a better photographic place to create more exciting cosplay photos.



COSPLAYER

- Get the information from their own chatting group
- Come to the festival
- Find a place to place their belongings and get change
- play with friends and take photos with everyone

COMIC/ANIME LOVER

- Get the information from internet
- Come to the festival to see the scale of the show
- Take pictures with cosplayers
- Try the costume

NORMAL PEOPLE

- Couple dating place
- get inspired by the cosplayers
- Food
- Try the costume