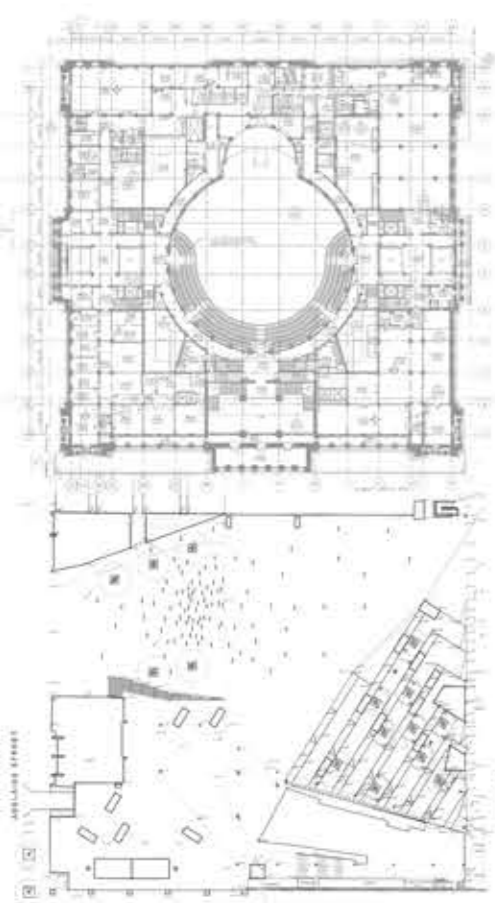
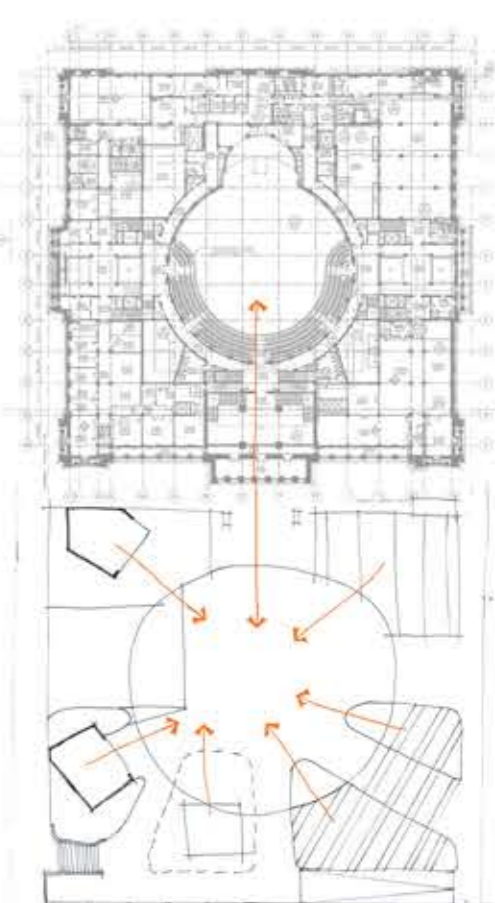
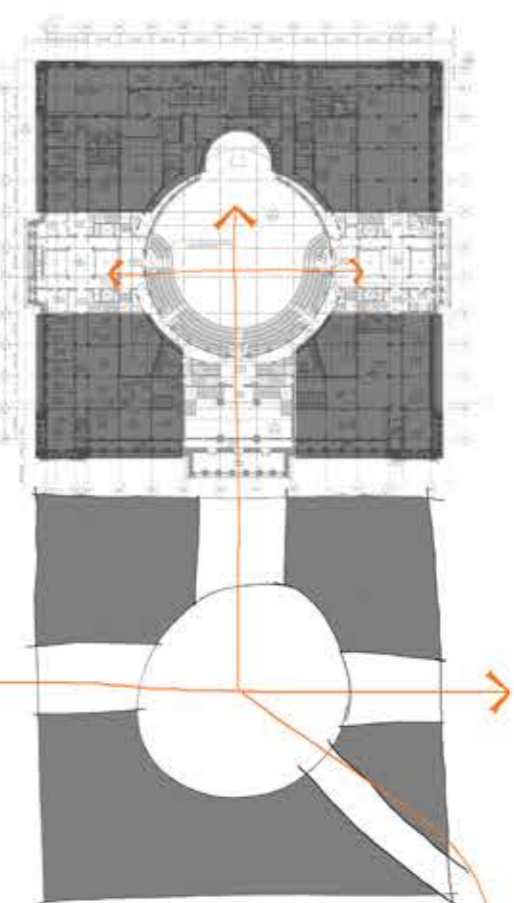
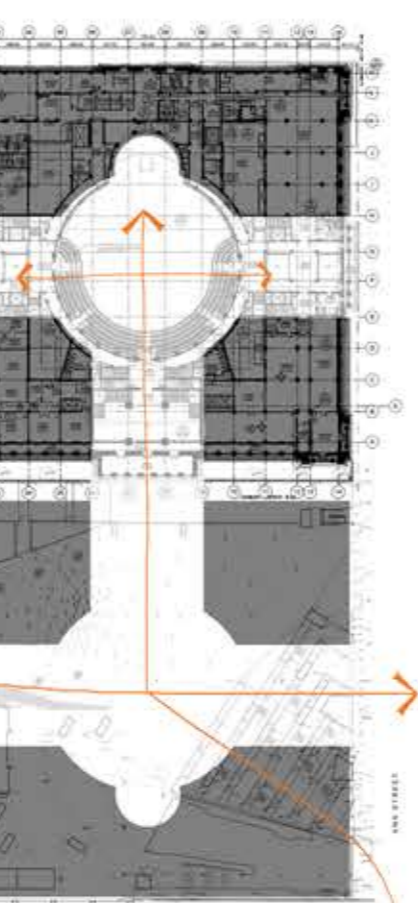
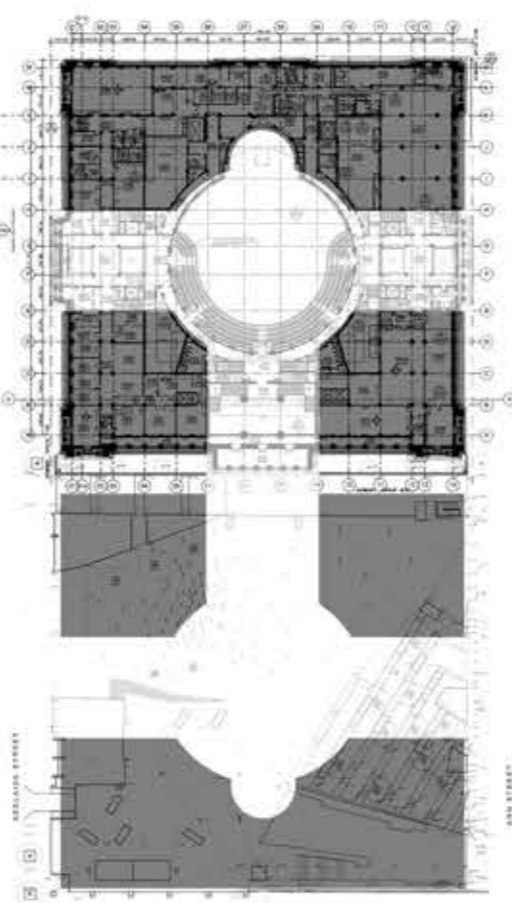
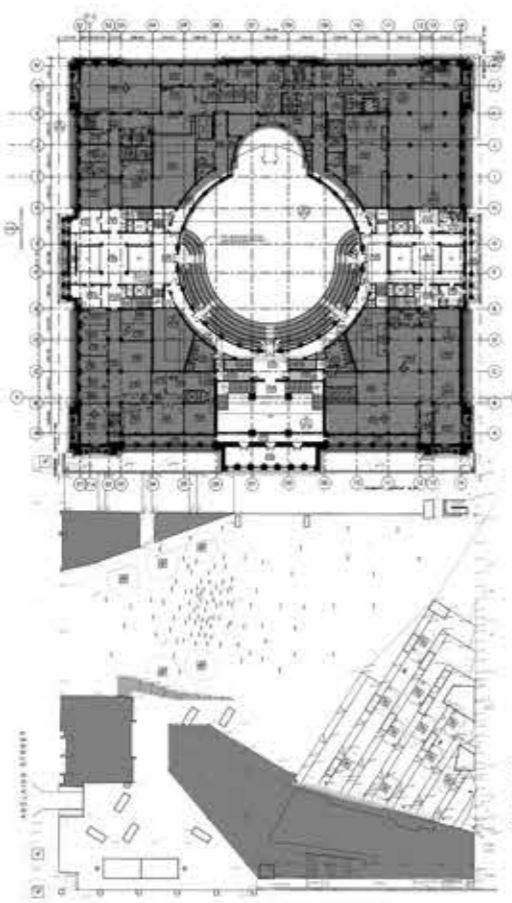


KING GEORGE SQUARE RE-IMAGINED

Ethan Fitzpatrick



The current version of King George Square fails to form a relationship with the hero of the site - City Hall

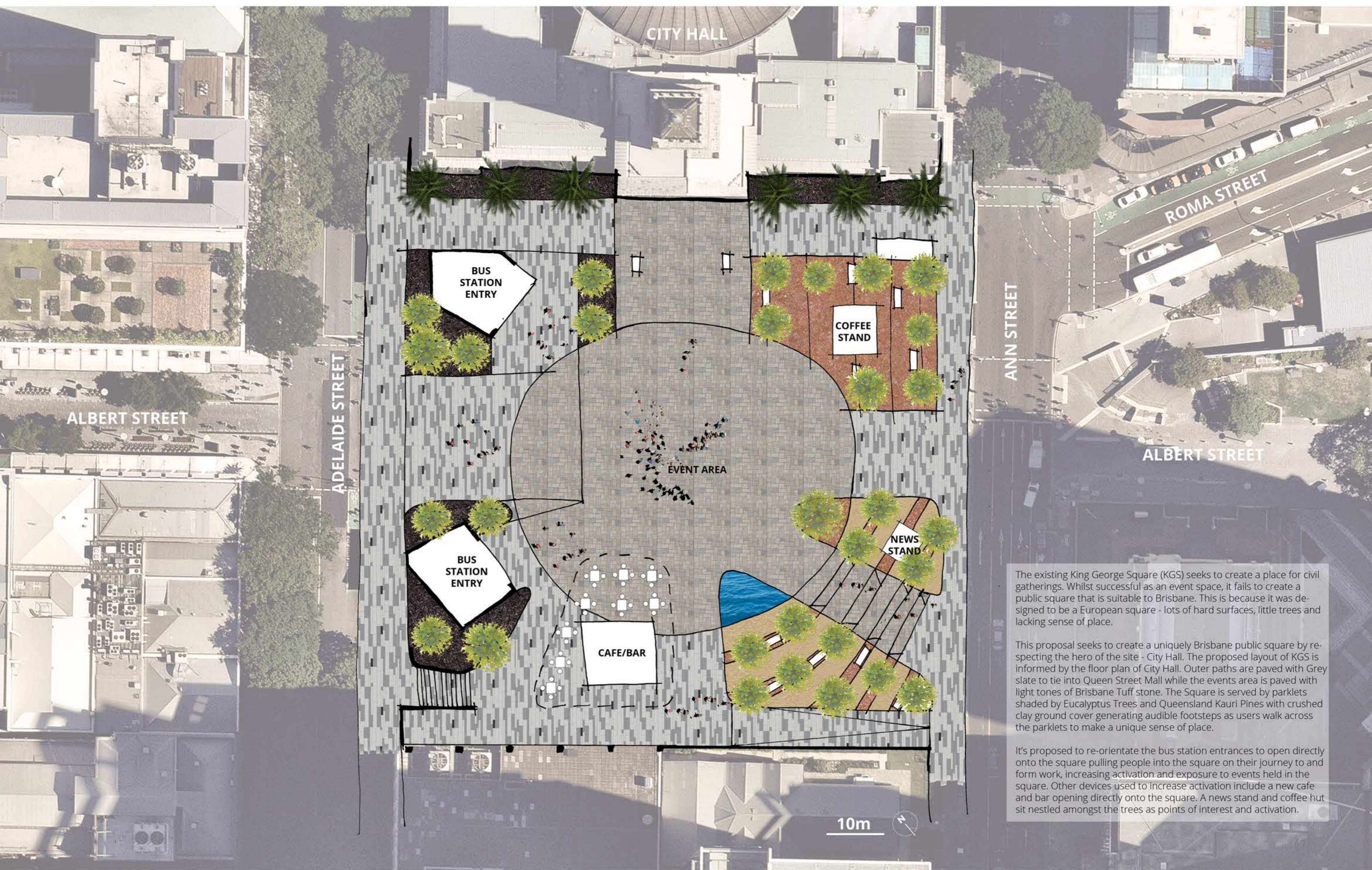


A new King George Square should respect City Hall

Existing pedestrian pathways overlaid

The basic layout of the new King George Square

The new King George Square uses anchors to draw people in



The existing King George Square (KGS) seeks to create a place for civil gatherings. Whilst successful as an event space, it fails to create a public square that is suitable to Brisbane. This is because it was designed to be a European square - lots of hard surfaces, little trees and lacking sense of place.

This proposal seeks to create a uniquely Brisbane public square by respecting the hero of the site - City Hall. The proposed layout of KGS is informed by the floor plan of City Hall. Outer paths are paved with Grey slate to tie into Queen Street Mall while the events area is paved with light tones of Brisbane Tuff stone. The Square is served by parklets shaded by Eucalyptus Trees and Queensland Kauri Pines with crushed clay ground cover generating audible footsteps as users walk across the parklets to make a unique sense of place.

It's proposed to re-orientate the bus station entrances to open directly onto the square pulling people into the square on their journey to and from work, increasing activation and exposure to events held in the square. Other devices used to increase activation include a new cafe and bar opening directly onto the square. A news stand and coffee hut sit nestled amongst the trees as points of interest and activation.

