

BRISBANE'S CANVAS

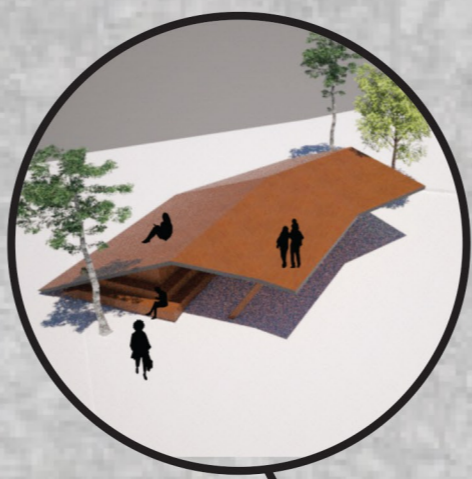
JOHN NICHOLSON
PLUS ARCHITECTURE STUDENT DESIGN COMPETITION

As an emblem of society and its guises, King George Square should be celebrated and appreciated as an icon of the city and its people. The new architectural insertion into the site will blur the layer of civic, ceremonial, community, and circulation functions to create a fluid public space.

To achieve this, the new design makes the space flexible, engaging and attractive to pedestrians, while allowing for the differing scales of gatherings and functions the space is intended to host.

Creating an adaptable multi-use setting will encourage ownership of the square to the community, while restoring vibrancy and sense of place. Local control of King George Square creates a stage to showcase Brisbane, and its ever-changing character. The adaptable and transportable small-scale structures turn the square into a canvas, where the community decide the urban form and reflect a true Brisbane. Meanwhile the larger permanent structures act to create a strong sense of place on a different scale functioning as viewing platforms for the square and housing public services such as an information and stages while providing shading and shelter to the square.

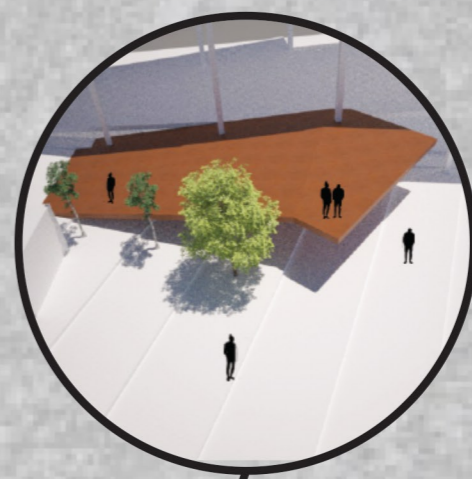
The Western permanent structure functions as a multi-use gathering and performance space.



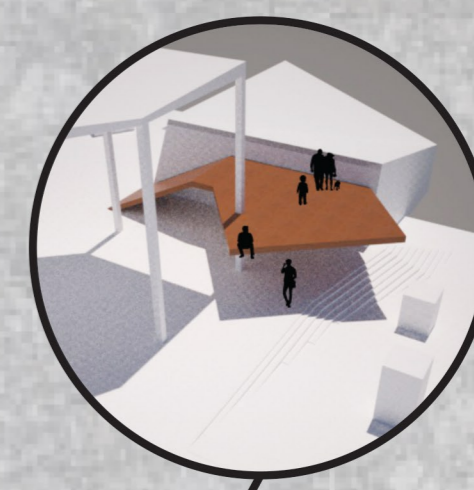
Southern form houses information centre at main entrance of the square and extends from the existing form of the bus entry



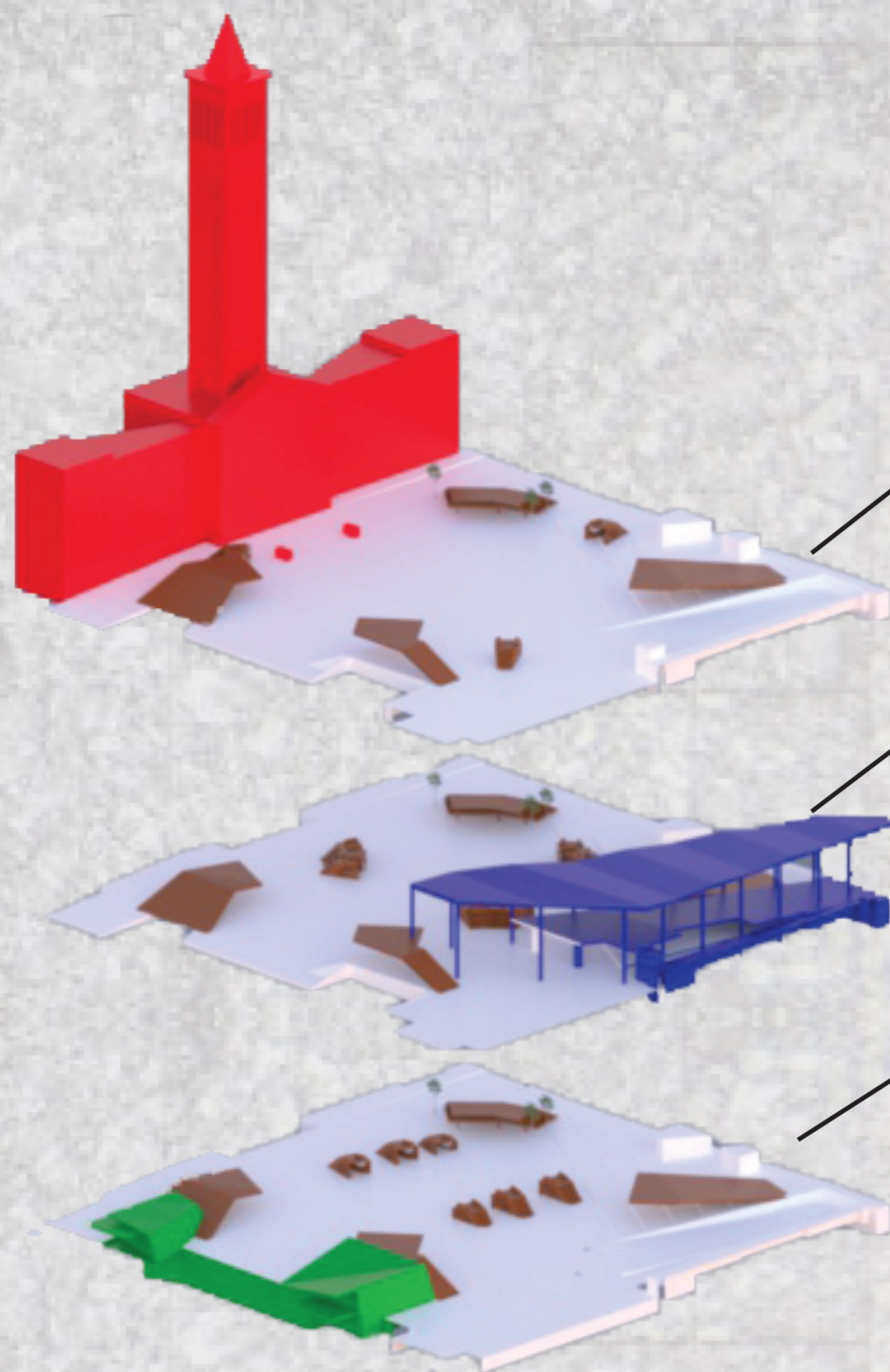
Northern structure connects to the existing structure in the square to provide an exposed extension to house a shaded gathering space.



The Eastern most structure connects to the existing bus-way structure while providing permanent housing for the existing cafe as a welcoming space to the square



Site plan showing the new permanent design insertion into King George Square and its relationship to its surroundings, circulation flow and creating a sense of place.

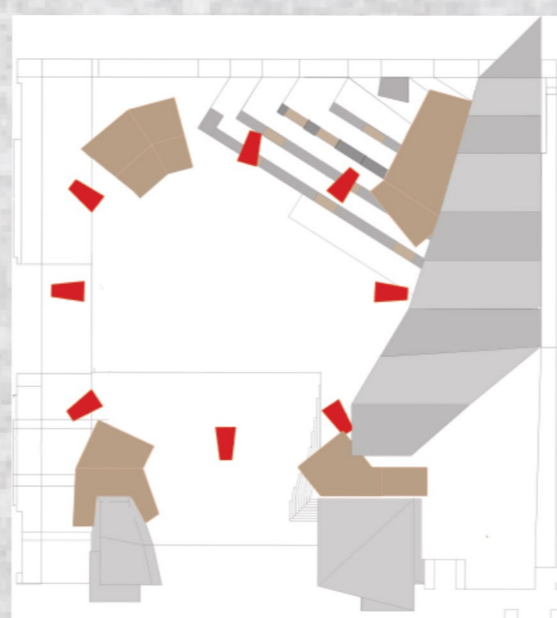


The civic heart of Brisbane is created by the adjacency of Brisbane City Hall and an array of significant statues and displays and reflected through the place making of the new design.

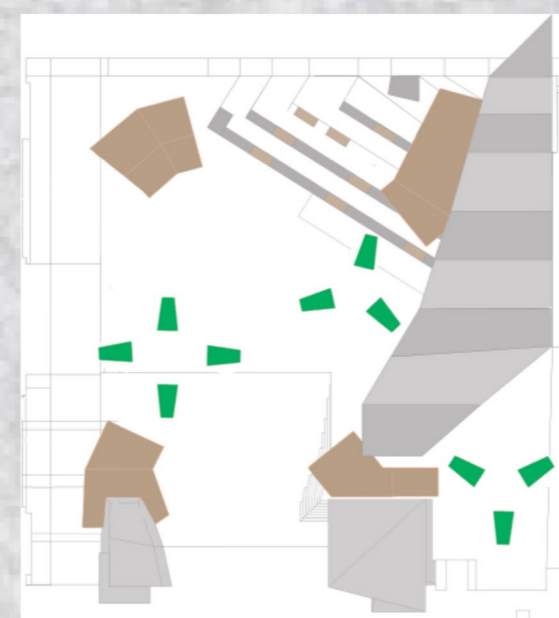
As Brisbane's largest public square, King George Square will function as a community gathering space and represent the people of Brisbane's interests.

Due to the location of the space in the centre of Brisbane and the proximity to public transport hubs, this design creates adaptable flows of people through and to the space.

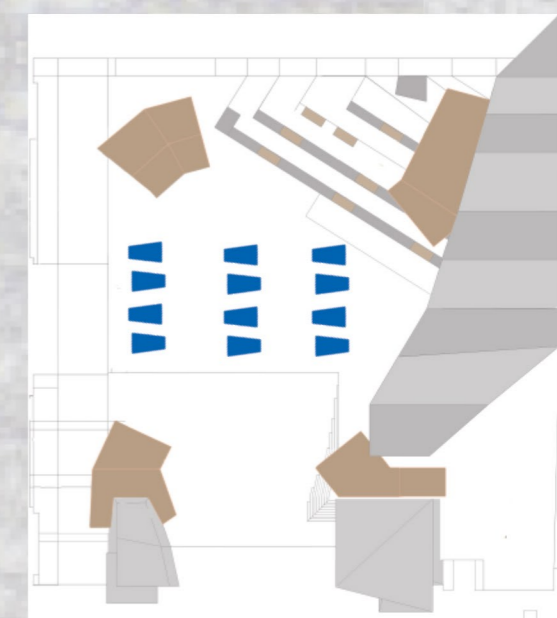
Potential adaptability of the square using the movable structures



Using small nodes to create large central gathering space for formal large scale gathering.

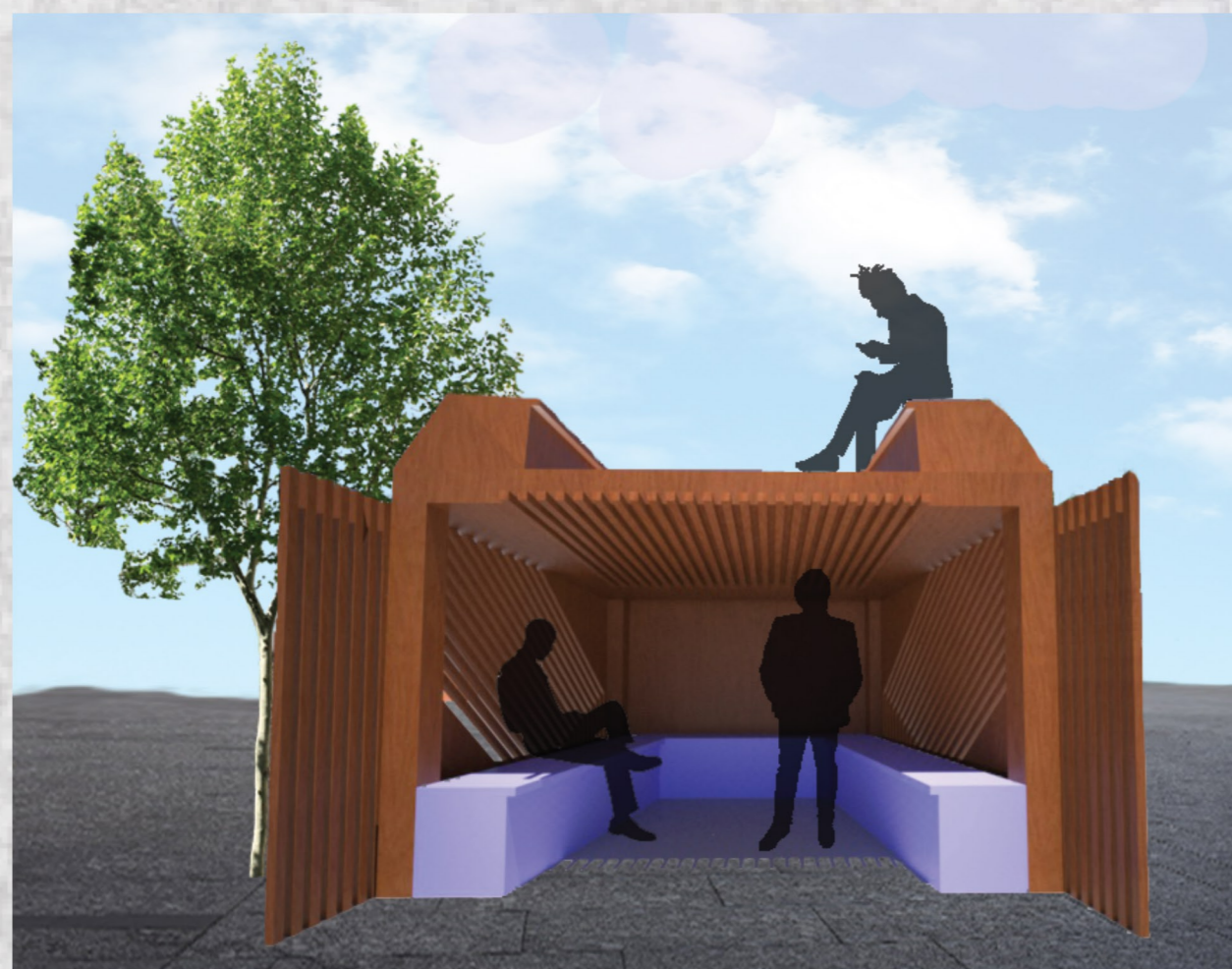


Creating smaller scale group meeting places for more intimate gathering and connection.



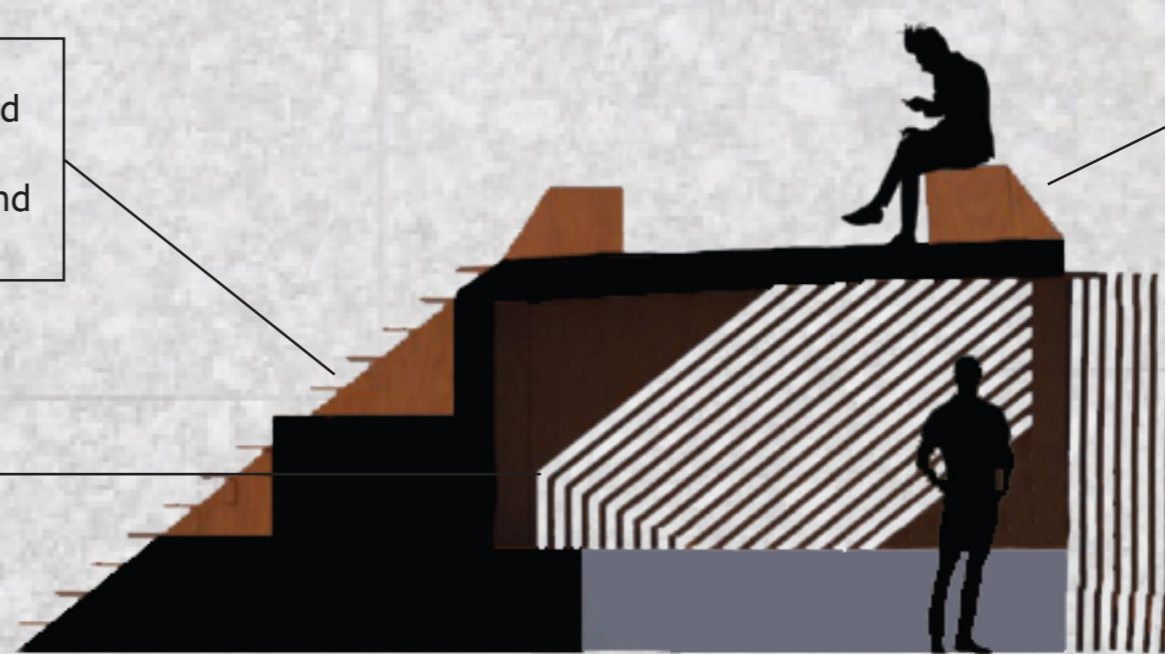
Using small nodes to create a community marketplace adaptable for multiple scales and layouts

View of a temporary/adaptable structure showing the flexibility and potential ownership of the structures.



Stairs and platforms make sure maximum usable space is created from these small forms to encourage creative ownership and adaptability.

Use of wood and paneled battens create welcoming and comforting spaces within the often harsh setting of the city.



Multi-level make-up of small structures allows user to choose natural setting and amount of shelter/shading.

For security and safety and when nodes are not being used, battened doors can be closed.

Perspective shows use of the Western permanent structure, left simple and exposed to encourage creative use of space.

At night the small scale forms internal lighting turns the structures into lanterns helping to light the square and create a culture of 24 hour usage.

