

# URBAN CULTURAL MOVEMENT

King George Square, located in the central district of Brisbane CBD is vastly used as a major thoroughfare to this day. With this new development in place, the space will not only be used as a thoroughfare but more as a destination for the community to occupy upon and tressure.

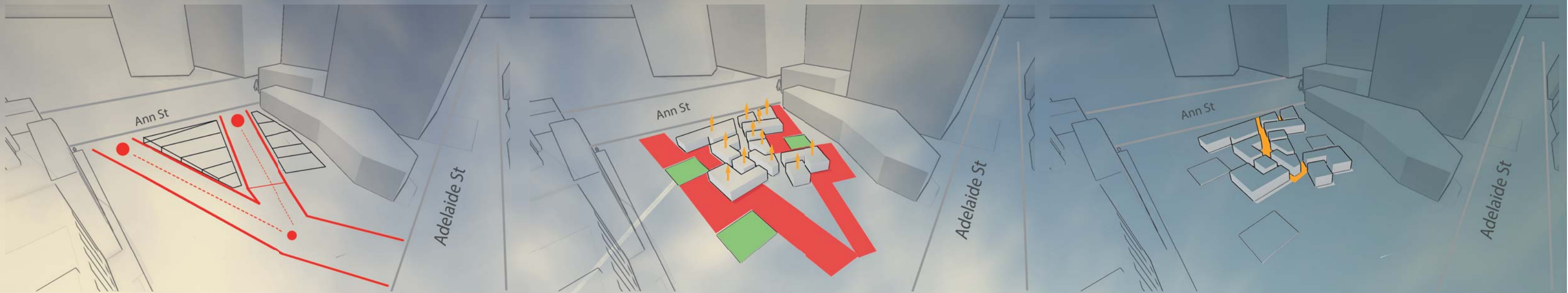
The new proposal "Urban Curiosity" transforms a neglected space into a space of exploration and discovery in the heart of Brisbane city. Over the years, the city skylines are constantly redeveloping, as cities are a centre of human civilisation and invention. We need to look forward and design cities into the future. However below our city skylines, what gives the city's true identity is through these, forgotten, unwanted small pockets of spaces. These small hidden agenda's are brief escape from reality, from the busy city lifestyle. These spaces are favourable for store owners, cafes and boutiques due to the separation of the city life, allowing occupants to express their own twist to the space inside. The objective of this proposal is to introduce the Pop-Up Store culture into our vast Brisbane city lifestyle and culture as pop-up stores are becoming a movement which could be predominantly expanded, explored socially and culturally with the community.

The fundamental idea of these series of spaces were influenced by the circulation pattern of the city that consists of thoroughfares lane ways and entry points. The objective of the form is to immerse users into the program, designing obscure spaces in narrow alley ways which the users will feel persuaded to walk around and explore. The level above is a cultural hub which blends multiple settings into a centralised destination; a place to congregate, socialise and a playground for children. The notable issue for King George is the climate, due to lack of shading devices which causes the space to be underutilized majority of the time. The greenery contrasts with the tall surrounding buildings, as well provides the comfort of shade and a sense of home/place.



Brisbane City map

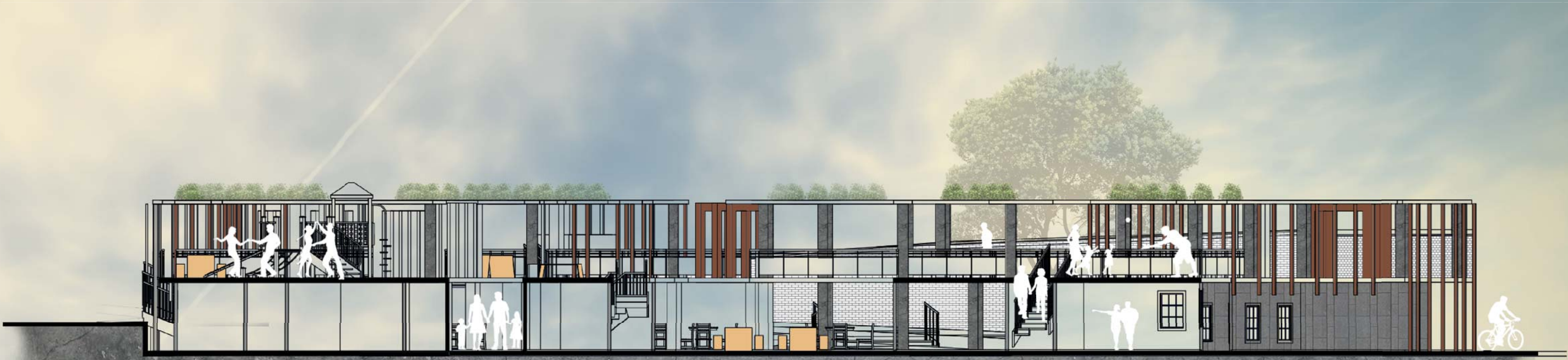
King George Square



Existing Thoroughfare Circulation

Redeveloped Thoroughfare with additional green space

City grid structural layout creating laneways in the center



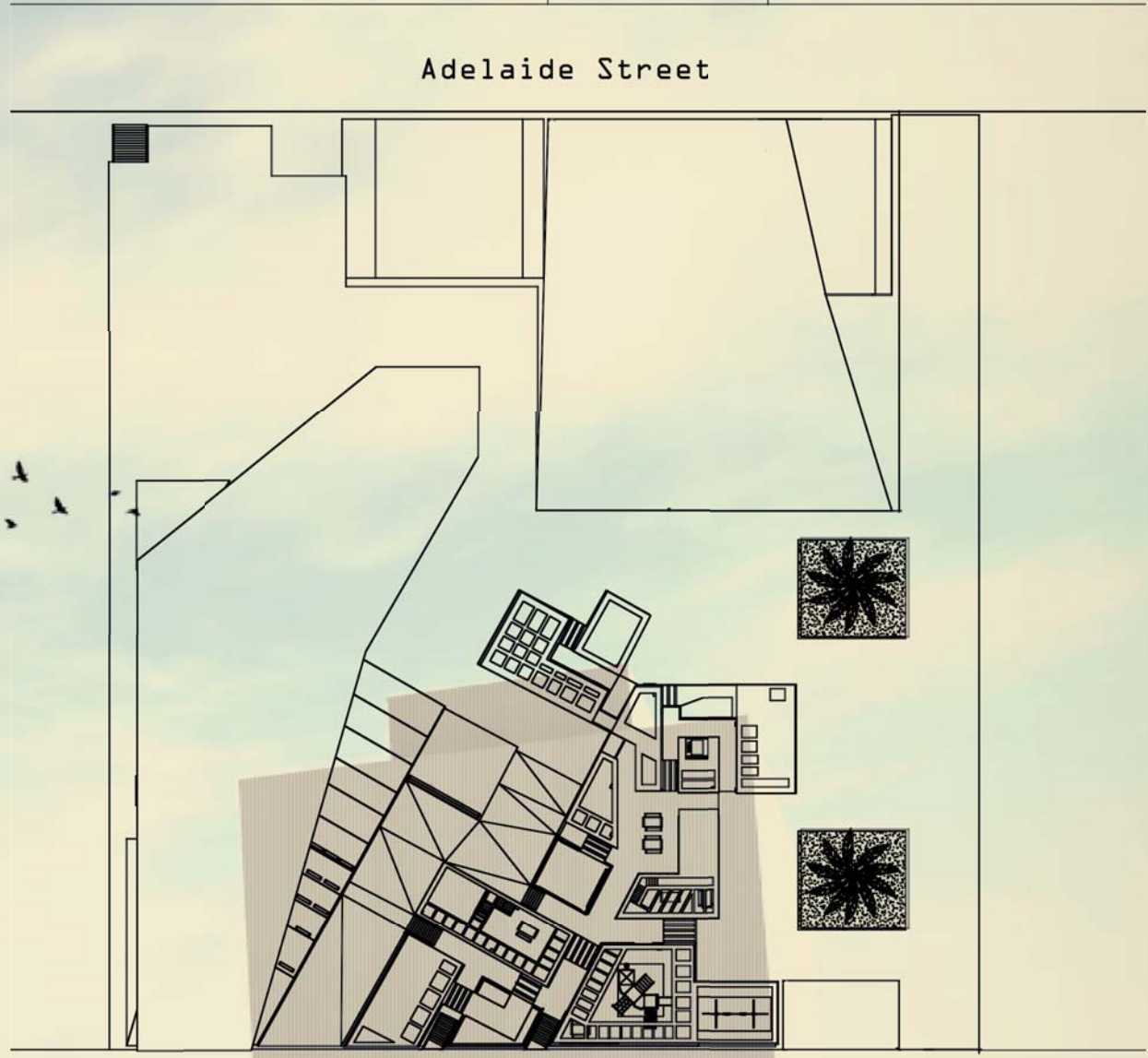
Section 1:200



Adelaide Street

Anne Street

Ground Floor 1:500



Adelaide Street

Anne Street

2nd Floor 1:500



Laneways/Central



Pop Up activity



Kids Play Ground

