

URBAN GROWASIS

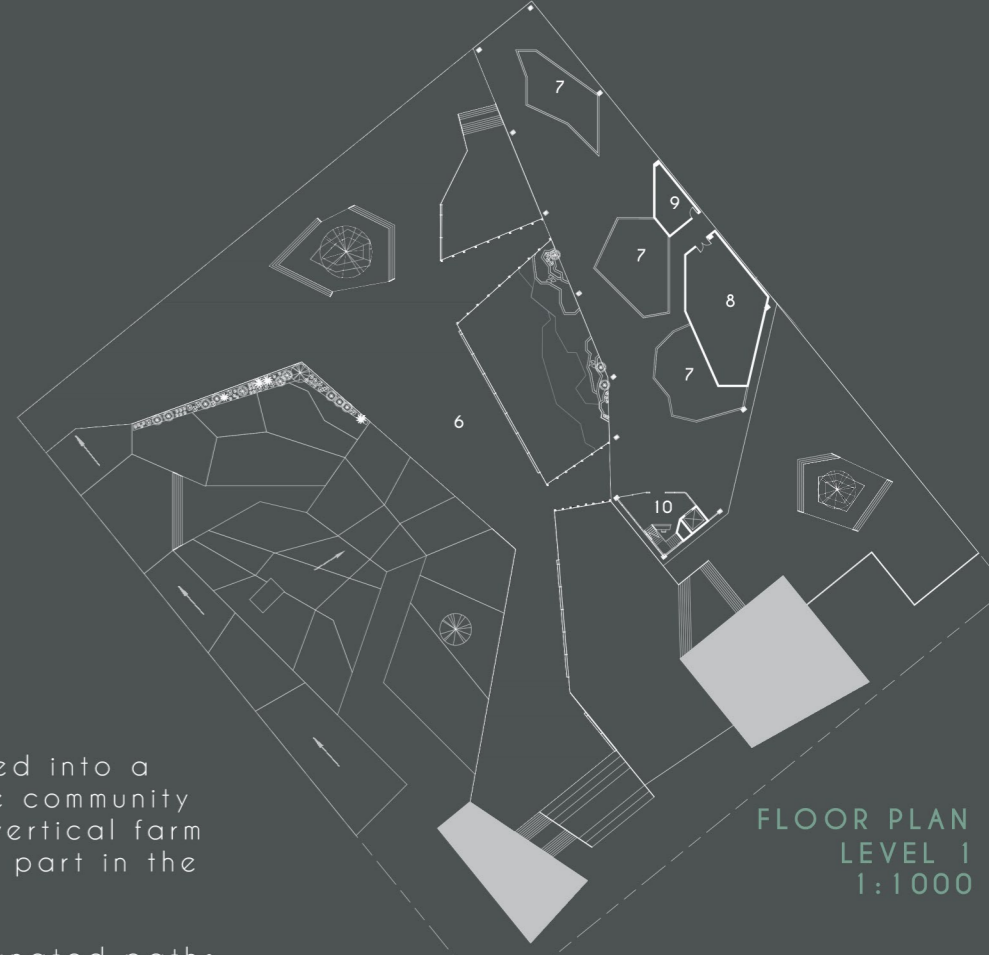
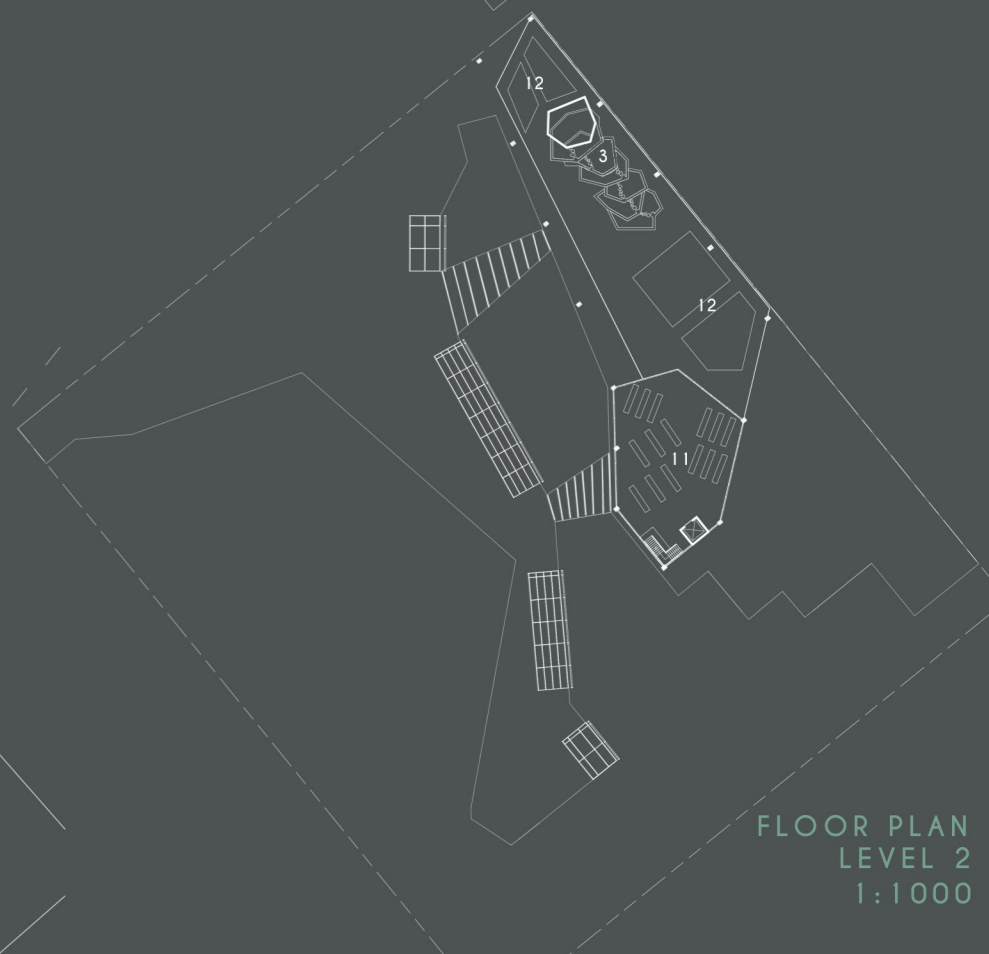
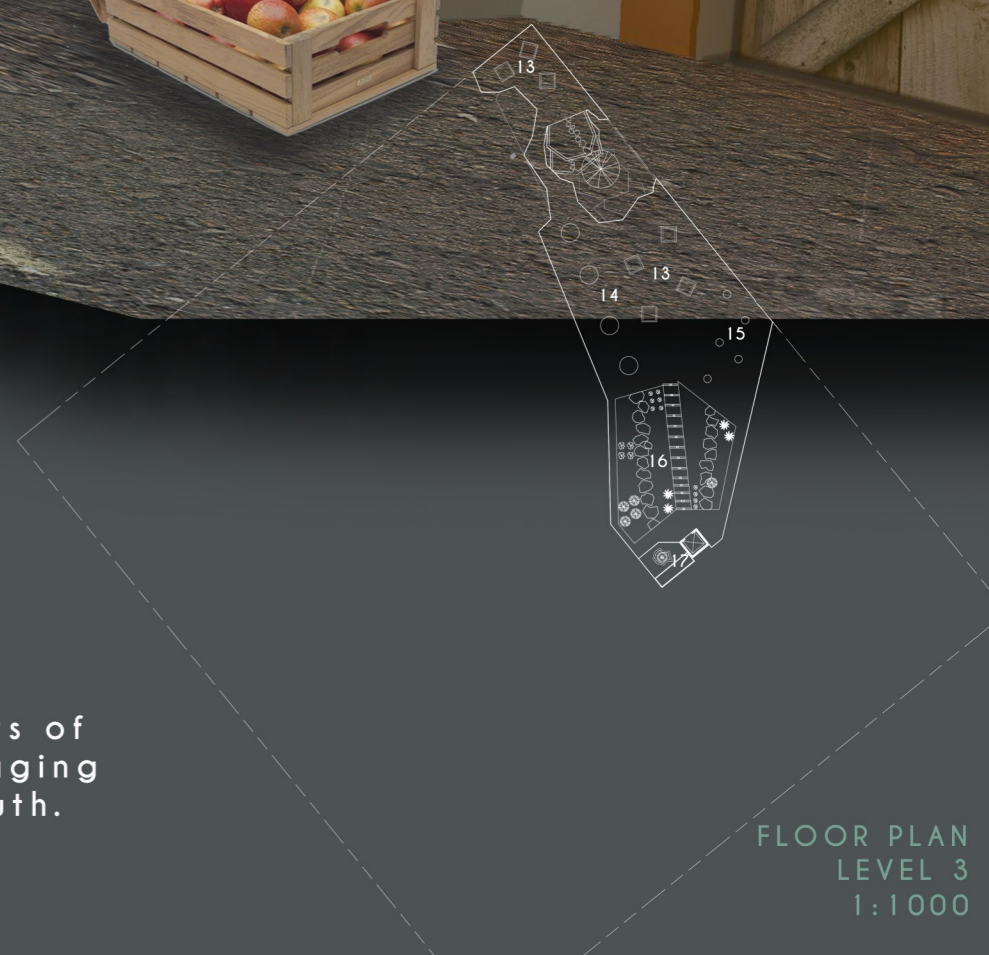
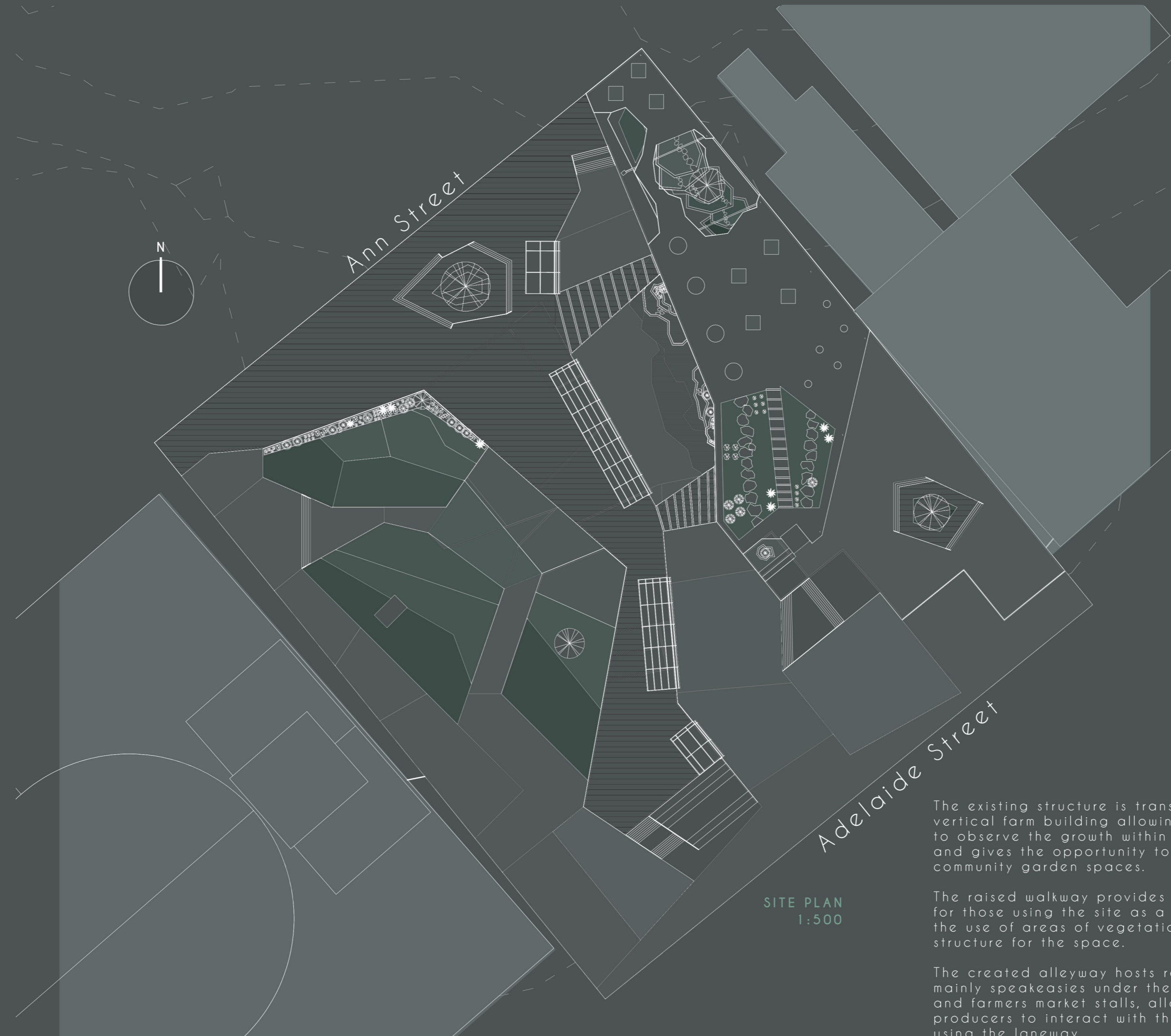
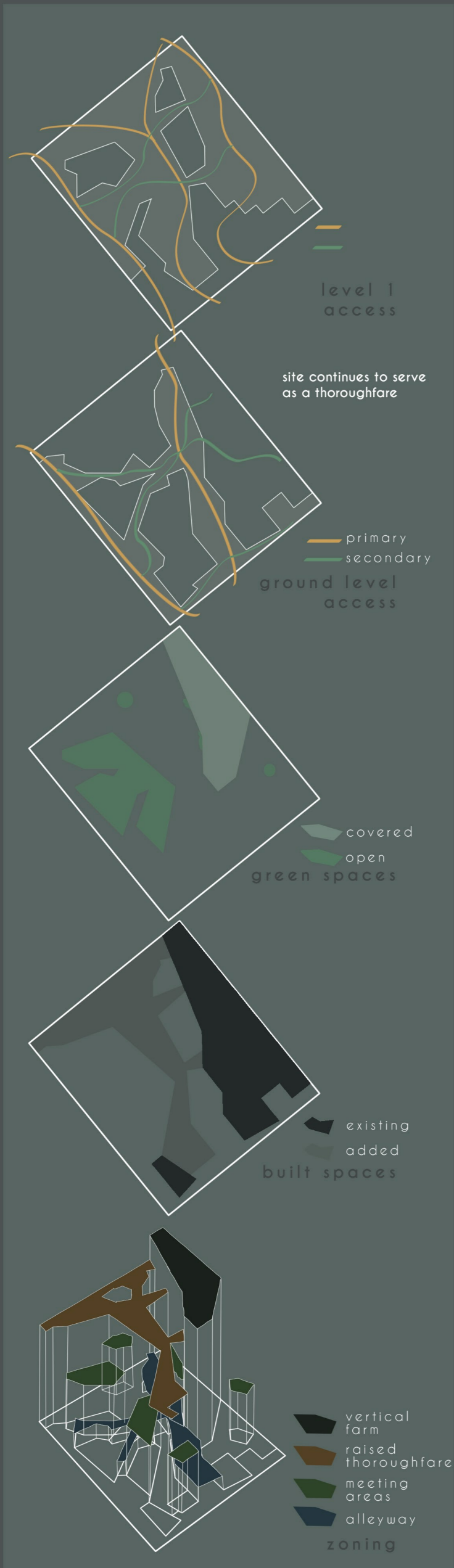


JESSICA SY

reclaiming the city for urban farming

Urban Growasis creates a community space for locals and visitors of Brisbane to experience farming within the urban setting, encouraging sustainable practices, education, discovery, and community growth.

Vertical farming incorporates technology and farming to maximise space for vegetation cultivation within the urban landscape.

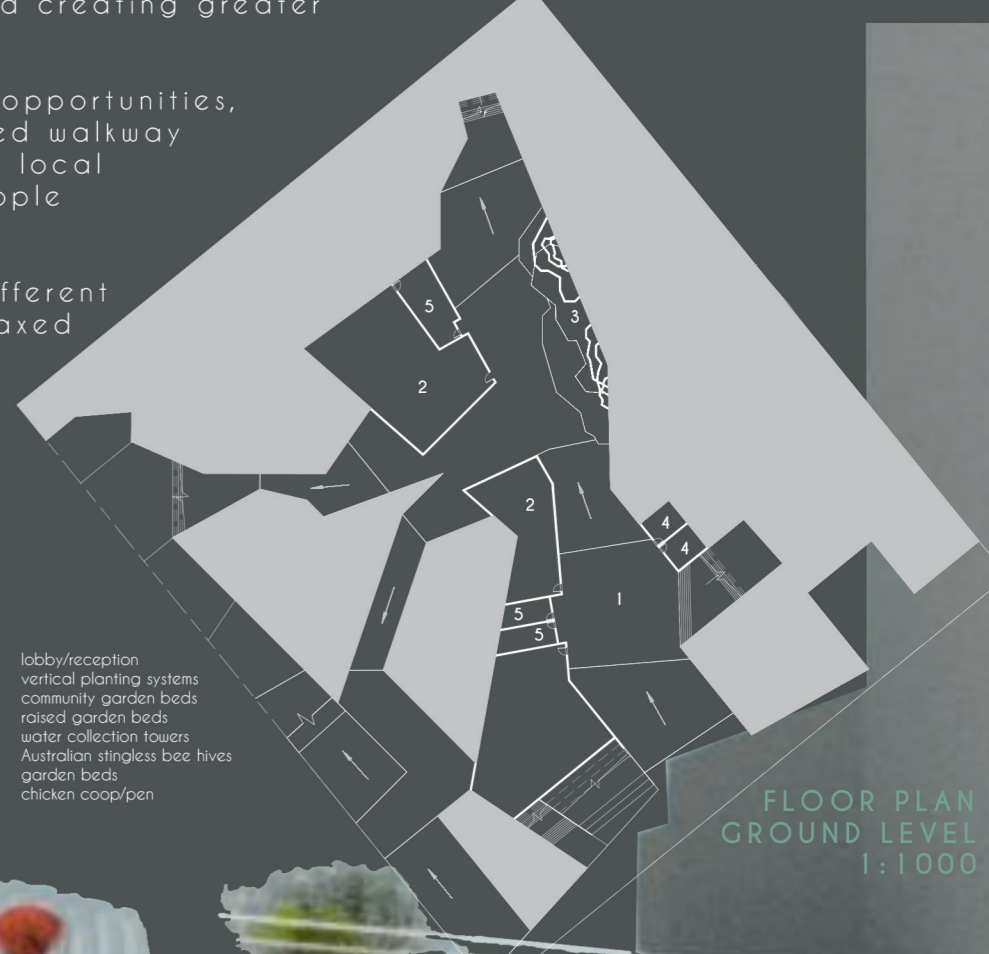
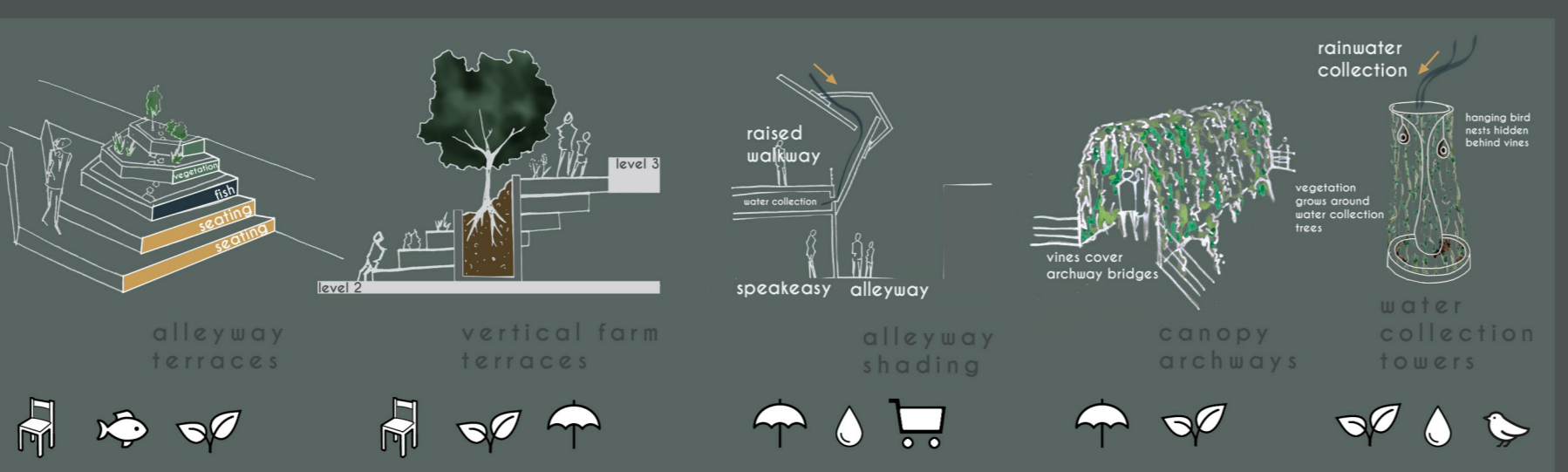


The existing structure is transformed into a vertical farm building allowing the community to observe the growth within the vertical farm and gives the opportunity to take part in the community garden spaces.

The raised walkway provides designated paths for those using the site as a thoroughfare, limiting the use of areas of vegetation and creating greater structure for the space.

The created alleyway hosts retail opportunities, mainly speakeasies under the raised walkway and farmers market stalls, allowing local producers to interact with the people using the laneway.

The contoured landscape mixes different types of materials to create a relaxed area of meeting with areas of vegetation, while still providing access throughout the site. This space can also host larger functions when required.



- alleyway
- speakeasy
- terrace
- public toilets
- kitchen
- raised walkway
- logasonic fish pond
- plant room
- storage
- lobby/reception
- vertical planting systems
- community garden beds
- raised garden beds
- water collection towers
- Australian stingless bee hives
- garden beds
- chicken coop/pen

Textures within the site are an important aspect to the design, mixing rustic materials to create a greater rural experience within the urban context.

